

# hauck

Made to care, designed for love

Collection '24  
TOYS

[www.hauckusa.com](http://www.hauckusa.com)



## CONTENTS



03 – 12



13 – 48



49 – 58



59 – 100

Flip this catalog to see  
our **Baby Gear!**



# ABOUT HAUCK USA

hauck has been doing business globally since 1923. In August 2022, hauck acquired the US Division of Legler Toys to become a major distributor of toys and gifts in North America. Through our domestic US warehouse in Pennsylvania and import programs, we continue driving value and accessibility for our customers. Hauck is a well-established German developer and producer of toys and baby products. With this acquisition we now offer a wider range of products within our portfolio.

### We have something for everyone!

Hauck USA has four major toy brands in our portfolio. These brands include: hauck ride-on toys for babies and youth, mojo hand painted animal figures from the UK, Nothing But Fun Toys, our curated classic pretend play brand and small foot from Germany, our featured wooden toy line. We have exciting innovations from each brand for 2024. We are so proud to offer such a wide range of toys as well as unbeatable customer service.

### Thank you!

We want to take this opportunity to thank each and every one of our retail partners for putting your trust in us and bringing us to where we are today. We come to work every day for you. Our commitment is stronger than ever in developing our partnership with you during this exciting time.

# CONTACT US



### Customer Service

orders, damages, payments, credits

contact@hauckusa.com | orders@hauckusa.com  
1-800-505-0950

### Specialty Sales Manager

Tracie Jensen

tracie.jensen@hauckusa.com  
704-797-1094



[www.hauckusa.com](http://www.hauckusa.com)



hauck\_usa  
hauck\_international

### Key Accounts Chief Sales Officer

Thomas Albrecht

thomas.albrecht@hauckusa.com  
704-441-3225

**hauck North America** 112 S. Tryon Street, Tryon Plaza, Suite 1130 Charlotte, NC 28284





## PICTOGRAMS

- Age recommendation
- Product with colored packaging
- Counter display
- Product with foil packaging
- Bulky goods
- Product with noise function
- Battery included
- Product with magnetic function
- Product with hook-and-loop function
- Product with wind-up function
- Product with articulated jaw
- Number of puzzle pieces
- Number of players

**All dimensions in the catalog  
are packaging dimensions!**

80303  
1st Ride Three  
Giraffe  
More on page 7

# 1st Ride Four

Measurements: 11.0" x 23.2" x 11.0"

Case Pack: 1

18m+

80401 - Matt - Blue



80402 - Matt - Pink



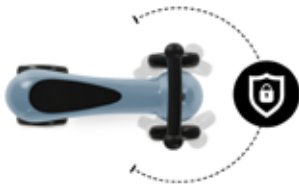
80403 - Matt - Green



LEARNING FUN FOR CHILDREN  
UP TO 55 LBS



MODERN DESIGN  
STABLE & TILT-PROOF



ANTI-SLIP HANDLEBAR  
AND COMFY SEAT



EASIER PUSHING THANKS TO  
ERGONOMIC FORM



SILENT & NON-SLIP  
COMFORT  
WHEELS











**NEW**

## 1st Ride Three

Measurements: 21.3" x 7.5" x 9.4"

Case Pack: 6

12m+

80301 - LadyBug



4 894352 803015

80302 - Zebra



4 894352 803022

80303 - Giraffe



4 894352 803039



SUITABLE  
UP TO 44 LBS



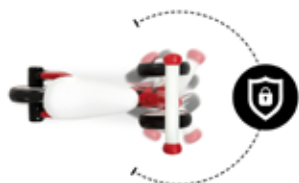
EASIER PUSHING THANKS TO  
ERGONOMIC FORM



SEATING COMFORT  
& NOISE REDUCTION



TILT-PROOF THANKS TO  
STEERING ANGLE LIMITATION



ANTI-SLIP HANDLEBAR  
FOR OPTIMAL GRIP







# Skootie

Measurements: 8.3" x 25.0" x 10.6"

Case Pack: 1

12m+

85205 - Neon Green



85201 - Neon Blue



85204 - Neon Pink





# Lightning

Measurements: 8.9" x 36.6" x 20.3"

Case Pack: 1

4y+

90104 - Pink



90105 - Green



90107 - Orange



NEW

90109 - Black



NEW







**90309**

**Speedster - Green**

Measurements: 10.0" x 35.4" x 20.1"

Case Pack: 1

4y+



4 894352 903098



**90602**

**Cyclone - Red**

Measurements: 10.2" x 38.6" x 23.2"

Case Pack: 1

4y+



4 894352 906020







**NEW**

**I2411  
Adventure Pirate Ship**

More on page 42.

**small foot wooden toys** fulfill children's basic need for happy, boundless play. With their modern design and diverse, simple first play experiences, they offer children space for their own world of ideas and help develop imagination and creativity.





**11608**

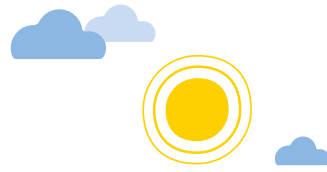
**Whale Baby Walker**

Measurements: 18.1" x 8.7" x 16.5"

Case Pack: 2

12m+ 

  
4 020972 116086



**10947**

**Pastel Baby Walker**

Measurements: 22.4" x 7.1" x 16.1"

Case Pack: 1

12m+ 

  
4 020972 109477



TOPSELLER

**11607**  
**Elephant Baby Walker**

Measurements: 18.1" x 5.5" x 16.5"  
Case Pack: 2

12m+



TOPSELLER

**7393**  
**Bear Baby Walker**

Measurements: 15.4" x 4.3" x 16.5"  
Case Pack: 1

12m+





**NEW**

**12318**

**Rainbow Building Blocks - Boutique**

Measurements: 11.02" x 2.17" x 5.51"

Case Pack: 6

12m+



**NEW**

**12226**

**Wooden Balance Geo Blocks**

Measurements: 7.28" x 4.33" x 1.77"

Case Pack: 6

3+



**11699**

**Building Blocks Safari Theme 50 Piece Playset**

Measurements: 7.1" x 7.1" x 6.5"

Case Pack: 6

12m+





**11700**

**Safari Truck Sorter**

Measurements: 9.3" x 3.5" x 5.1"

Case Pack: 6



**11702**

**Safari Numbers Puzzle**

Measurements: 11.8" x 8.9" x 0.4"

Case Pack: 6



**RETIRED**  
Order While  
Supplies Last.



**11703**

**Safari Letters Puzzle**

Measurements: 11.8" x 8.9" x 0.4"

Case Pack: 6



**RETIRED**  
Order While  
Supplies Last.



**11696**

**Safari Memory Game**

Measurements: 4.7" x 4.7" x 2.0"

Case Pack: 6



11722

### Pastel Building Blocks 50 Piece Playset



Measurements: 7.1" x 7.1" x 6.3"

Case Pack: 6



11721

### Pastel Animals Stacking Tower

Measurements: 5.5" x 5.5" x 5.5"

Case Pack: 6

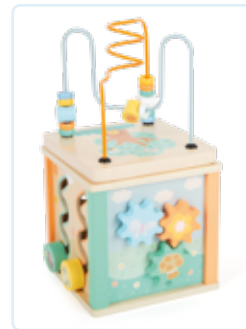


11724

### Pastel Activity Cube

Measurements: 7.5" x 6.7" x 7.1"

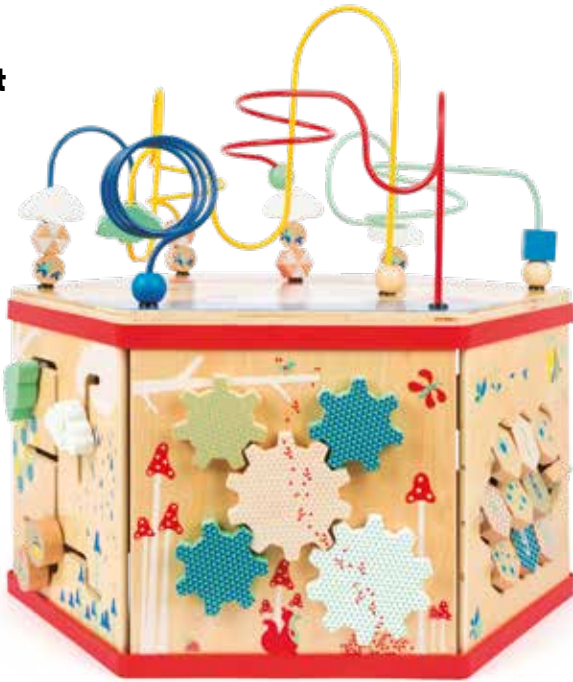
Case Pack: 6





**11051**  
**XL Activity Center Sweet Bug Theme**

Measurements: 19.3" x 17.1" x 10.2"  
 Case Pack: 1



**TOPSELLER**

**11777**  
**Rainbow Shape Sorter**

Measurements: 6.3" x 6.3" x 6.3"  
 Case Pack: 6



**TOPSELLER**

**11567**  
**Rainbow Rainmaker**

Measurements: 2.4" x 2.4" x 7.9"  
 Case Pack: 6



**10585**

**Small Rainbow Building Blocks**

Measurements: 7.5" x 1.4" x 5.5"

Case Pack: 6



**TOPSELLER**

**6969**

**Large Rainbow Building Blocks**

Measurements: 11.0" x 2.4" x 5.5"

Case Pack: 3



**11412**

**XL Wooden Rainbow**

Measurements: 15.0" x 2.4" x 9.4"

Case Pack: 3





**11794**

**Rainbow Stacking Tower**

Measurements: 5.1" x 5.1" x 9.3"

Case Pack: 6



**TOPSELLER**

**10961**

**Motor Skills Caterpillars (14 unit display)**

Measurements: 7.3" x 8.3" x 3.0"

Case Pack: 1



**TOPSELLER**

**10588**

**Colorful Stacking Rocket**

Measurements: 3.9" x 3.3" x 9.4"

Case Pack: 6



**TOPSELLER**

**11106**

**Motor Skills 3-in-1 Playset**

Measurements: 12.8" x 5.1" x 9.6"

Case Pack: 3



**10605**

**Activity Center with  
Marble Run**

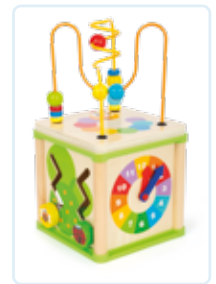
Measurements: 11.2" x 10.4" x 11.6"  
Case Pack: 1



**10074**

**Activity Center Sweet  
Little Bug Theme**

Measurements: 7.5" x 6.5" x 7.3"  
Case Pack: 6



**10319**

**Telephone Shape Sorter**

Measurements: 9.4" x 7.3" x 9.6"  
Case Pack: 4



**10315**

**Shed Motor Skills Trainer**

Measurements: 9.4" x 6.7" x 7.3"  
Case Pack: 3





**TOPSELLER**

**10601**

**Rally Hampering Marble Run**

Measurements: 15.0" x 4.3" x 13.4"

Case Pack: 4



**11084**

**Hammering House**

Measurements: 9.4" x 7.9" x 7.3"

Case Pack: 3



**RETIRED**  
Order While  
Supplies Last.



**5807**

**Smack The Bird Game**

Measurements: 9.4" x 4.7" x 5.5"

Case Pack: 6



11735

### Vacuum Cleaner Playset

Measurements: 22.0" x 4.9" x 2.6"

Case Pack: 6



6475

### Colorful Threading Shoes

Measurements: 5.5" x 3.7" x 7.3"

Case Pack: 6



TOPSELLER

11873

### Car Ramp Racing Playset

Measurements: 11.0" x 4.1" x 11.2"

Case Pack: 6





**NEW**

### 12348 Pull-Along Dump Truck Playset

Measurements: 8.86" x 5.12" x 6.50"

Case Pack: 4

18m+

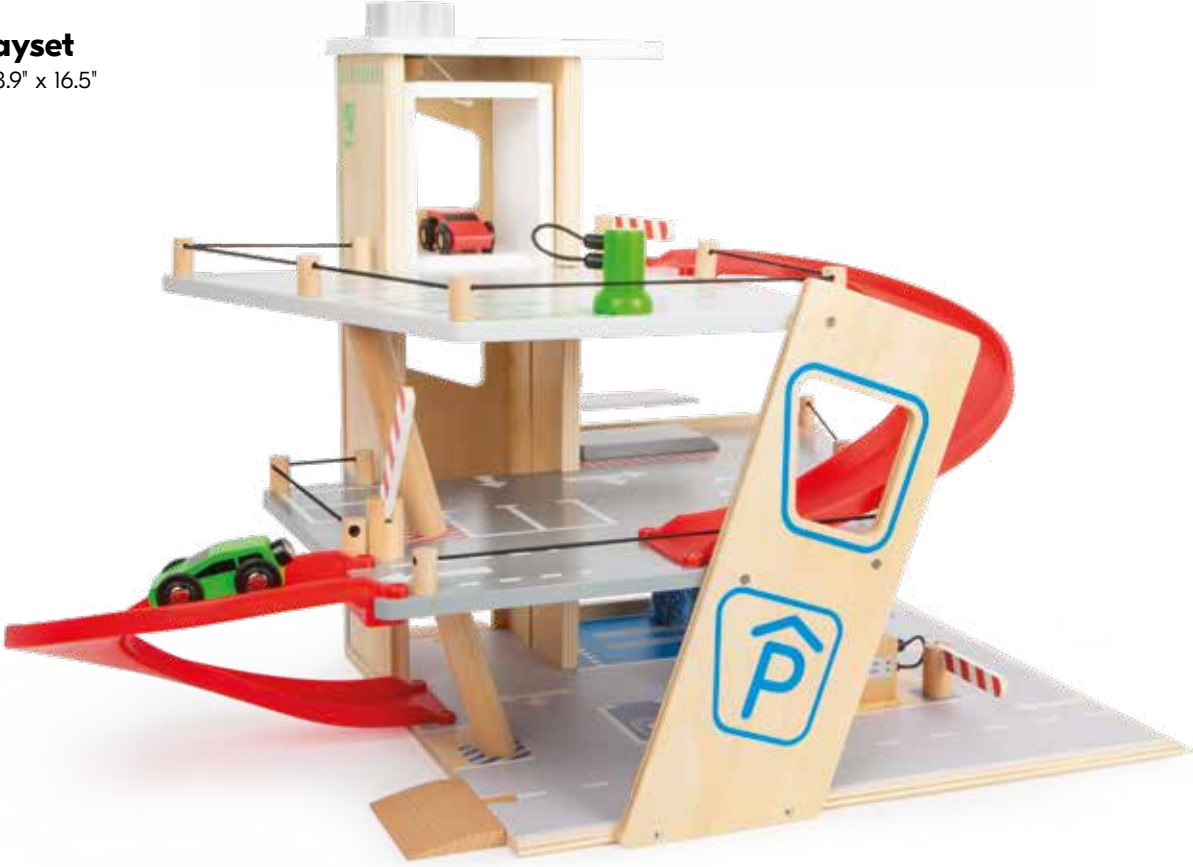


### 11676 City Garage Playset

Measurements: 15.7" x 3.9" x 16.5"

Case Pack: 3

3+



**10504**

### Wooden Toy Train - My Zoo

Measurements: 11.0" x 2.4" x 9.4"

Case Pack: 3



**11054**

### Building Blocks Zoo Theme

Measurements: 7.1" x 7.1" x 7.9"

Case Pack: 3



**3945**

### Wooden Manger Set

Measurements: 9.4" x 7.9" x 5.5"

Case Pack: 3





**11863**

**Dynamite Wobbling Tower**

Measurements: 7.5" x 4.3" x 9.8"

Case Pack: 6



**TOPSELLER**

**11973**

**Wobbling Tower Game**

Measurements: 3.9" x 3.1" x 11.4"

Case Pack: 3



**TOPSELLER**

**12011**

**Vegetable Garden Playset**

Measurements: 9.4" x 4.3" x 13.4"

Case Pack: 6



**10963**

**Domino Game Safari Theme**

Measurements: 5.5" x 2.2" x 3.3"

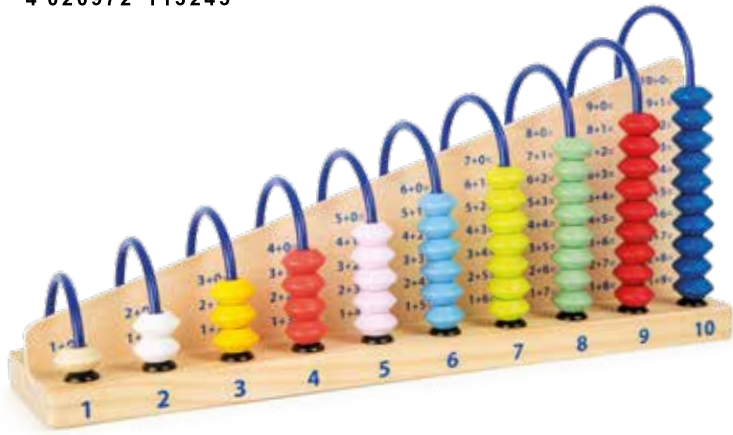
Case Pack: 6



**RETIRED**  
Order While  
Supplies Last.

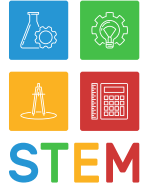
**11324**  
**Abacus Educational Toy**

Measurements: 12.0" x 3.3" x 5.9"  
 Case Pack: 6



**10716**  
**Math Number Tiles Educational Toy**

Measurements: 15.2" x 9.3" x 2.4"  
 Case Pack: 4



**TOPSELLER**

**4768**  
**Educational Board Dates, Times & Seasons**

Measurements: 12.2" x 2.0" x 12.2"  
 Case Pack: 6





**NEW** **11193**  
**Wooden Laptop with Magnet Board**

Measurements: 11.81" x 0.59" x 8.86"

Case Pack: 6

6+



4 020972 111937



**10732**  
**Colorful Magnetic Letters**

Measurements: 6.7" x 5.7" x 2.0"

Case Pack: 6

3+



4 020972 107329



**RETIRED**  
 Order While  
 Supplies Last.



**10731**  
**Colorful Magnetic Numbers**

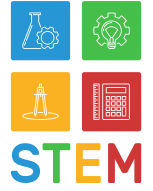
Measurements: 6.7" x 5.7" x 2.0"

Case Pack: 6

3+



4 020972 107312



**RETIRED**  
 Order While  
 Supplies Last.



**NEW**

**12254**

**Xylophone Groovy Beats**

Measurements: 10.24" x 2.76" x 5.12"

Case Pack: 6

18m+



**NEW**

**12252**

**Musical Eggs Groovy Beats**

Measurements: 5.51" x 2.36" x 5.51"

Case Pack: 6

6m+



**NEW**

**12251**

**Maracas Groovy Beats**

Measurements: 4.33" x 2.36" x 6.89"

Case Pack: 6

12m+





**NEW** **12253**  
**Guitar Groovy Beats**

Measurements: 9.65" x 3.35" x 25.98"  
Case Pack: 4

3+



**NEW** **12250**  
**Drum Groovy Beats**

Measurements: 9.25" x 4.33" x 8.27"  
Case Pack: 4

3+



**NEW** **12256**  
**Piano Groovy Beats**

Measurements: 14.96" x 11.22" x 13.78"  
Case Pack: 2

3+



**NEW**

**12216**

**Children's Play Kitchen - Boutique**

Measurements: 25" x 7.68" x 15.75"

Case Pack: 1

3+



4 020972 122162



**NEW**

**12331**

**Cuttable Lunch Set**

Measurements: 6.3" x 2.95" x 5.71"

Case Pack: 6

24m+



4 020972 123312





**NEW** **12293**  
**Coffee and Tea Set - Boutique**

Measurements: 9.45" x 3.94" x 7.09"  
Case Pack: 4

3+



**NEW** **12325**  
**Picnic Basket - Boutique**

Measurements: 11.42" x 7.87" x 7.48"  
Case Pack: 4

3+



**11158**

**Compact Play Kitchen Playset**

Measurements: 15.7" x 4.1" x 11.0"

Case Pack: 3



**11063**

**Cuttable Pizza Playset**

Measurements: 11.0" x 1.6" x 9.6"

Case Pack: 3



**10149**

**Cupcakes And Cakes Cutting Set**

Measurements: 9.4" x 2.8" x 7.1"

Case Pack: 6





**11159**  
**Graceful Children's Play**  
**Kitchen Playset**

Measurements: 19.3" x 4.7" x 9.8"  
 Case Pack: 1



**RETIRED**  
 Order While  
 Supplies Last.



**11214**  
**Tea Party Complete**  
**Playset**

Measurements: 7.7" x 4.3" x 5.5"  
 Case Pack: 3



**11098**  
**Crockery & Cookware**  
**Playset**

Measurements: 11.2" x 2.4" x 9.6"  
 Case Pack: 5



**TOPSELLER**

### 10595 Mixer For Play Kitchens

Measurements: 9.4" x 4.7" x 9.6"

Case Pack: 3



### 10593 Coffee Machine For Play Kitchen

Measurements: 7.5" x 4.1" x 9.4"

Case Pack: 3



### 10596 Blender For Play Kitchens

Measurements: 5.5" x 4.3" x 7.1"

Case Pack: 3



### 10592 Waffle Iron For Play Kitchens

Measurements: 9.6" x 2.4" x 7.1"

Case Pack: 3





**10594**

**Breakfast Set For Play Kitchen**

Measurements: 7.5" x 3.5" x 5.5"

Case Pack: 3



**11115**

**Tea Set with Kettle**

Measurements: 7.5" x 3.9" x 7.1"

Case Pack: 3



**TOPSELLER**

**11204**

**Pizza Oven Playset**

Measurements: 11.4" x 7.5" x 5.3"

Case Pack: 3



**11201**

**Kitchen Scale Playset**

Measurements: 9.4" x 3.7" x 9.4"

Case Pack: 3



**NEW**

**12249**

### Grocery Cash Register

Measurements: 7.87" x 3.94" x 8.86"

Case Pack: 4

3+



4 020972 122490



**NEW**

**12284**

### Market Food Set

Measurements: 7.48" x 4.33" x 5.51"

Case Pack: 6

3+



4 020972 122841



**TOPSELLER**

**11099**

### Cash Register Playset

Measurements: 9.6" x 4.5" x 9.4"

Case Pack: 3

3+



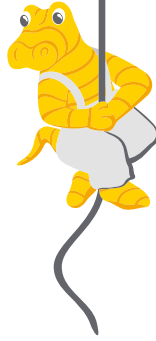
4 020972 110992





# 11805 Compact Workbench Playset

Measurements: 16.5" x 3.9" x 10.2"  
Case Pack: 3



# 11807 Tool Belt Playset

Measurements: 12.2" x 2.2" x 19.7"  
Case Pack: 6



# 11810 Construction Set

Measurements: 15.6" x 10.0" x 2.4"  
Case Pack: 4



11376

### Compact Workbench with Accessories

#### Nordic Theme

Measurements: 16.5" x 3.9" x 10.2"

Case Pack: 3



NEW

12361

### Fire Brigade Backpack

Measurements: 10.63" x 6.69" x 12.99"

Case Pack: 4





11917

**Emergency Backpack Playset**

Measurements: 10.6" x 5.1" x 11.4"

Case Pack: 4



**TOPSELLER** **11183**  
**Doctors Playset**

Measurements: 7.5" x 3.1" x 5.7"

Case Pack: 6



**NEW**

**12411**

### Adventure Pirate Ship

Measurements: 22.44" x 6.5" x 9.65"

Case Pack: 2

3+



4 020972 124111



**NEW**

**12412**

### Wooden Bending Dolls Pirate

Measurements: 9.65" x 1.97" x 7.87"

Case Pack: 6

3+



4 020972 124128





**TOPSELLER**

## 11802 Iconic Doll House Complete Playset



Measurements: 32.3" x 20.1" x 5.9"

Case Pack: 1



**NEW**

## 11804 Wooden Bending Dolls Family

Measurements: 11.02" x 1.97" x 5.51"

Case Pack: 6



**NEW**

**12277**

### Dollhouse with roof terrace

Measurements: 24.41" x 4.72" x 12.60"

Case Pack: 2

3+



**NEW**

**11409**

### Retro Make-Up Table with Mirror

Measurements: 13.39" x 4.33" x 11.22"

Case Pack: 4

3+





**11238**

**Baby Doll "Lukas" Playset**

Measurements: 7.5" x 4.7" x 13.4"

Case Pack: 6



4 020972 112385



**TOPSELLER**

**11237**

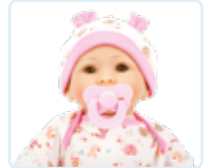
**Baby Doll "Hanna" Playset**

Measurements: 7.5" x 4.7" x 13.4"

Case Pack: 6



4 020972 112378



**4101**

**Rocking Horse**

Measurements: 24.4" x 7.3" x 22.0"

Case Pack: 1



4 020972 041012



# Training Bike-Trike 2-in-1

Measurements: 6.7" x 19.1" x 9.8"

Case Pack: 1



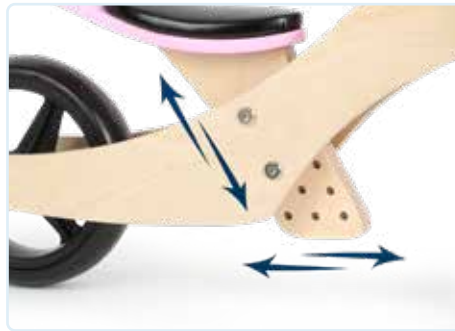
11612 - Pink



11610 - Turquoise



**RETIRED**  
Order While  
Supplies Last.



**TOPSELLER** **10278**  
**Hobby Horse "Purple Unicorn"**

Measurements: 9.4" x 4.7" x 31.5"

Case Pack: 6



**4151**  
**Hobby Horse "Rocky"**

Measurements: 9.1" x 4.3" x 31.5"

Case Pack: 6





**NEW**

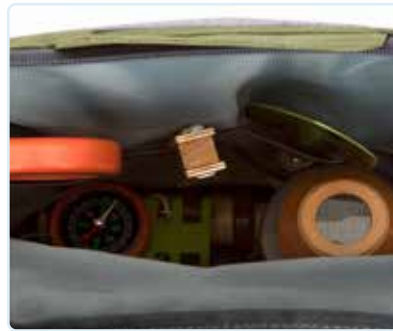
**12336**

**Explorer's Discover Backpack**

Measurements: 9.84" x 4.33" x 14.17"

Case Pack: 4

3+



**11656**

**Octopus Catamaran Water Toy**

Measurements: 6.3" x 4.9" x 7.9"

Case Pack: 4

24m+



**11658**

**Starfish Sailboat Water Toy**

Measurements: 7.1" x 3.7" x 7.9"

Case Pack: 4

24m+



**TOPSELLER**

**12014**

**Gardening Toolset with Wheelbarrow**

Measurements: 14.2" x 28.7" x 4.3"

Case Pack: 4

3+



**11882**

**Fanny Pack with Gardening Tools**

Measurements: 8.7" x 2.0" x 11.4"

Case Pack: 6

3+



**11881**

**Gardening Tool Playset**

Measurements: 3.7" x 2.6" x 9.6"

Case Pack: 6

3+





**NEW**

**233887**

**My First Rock &  
Roll Guitar**

More on page 53.



**Nothing But Fun Toys** is a curated collection of historically top selling plastic preschool toys which have been contemporarily redesigned and developed by world class product engineers and given best-in-class consumer friendly packaging into a cohesive global program under one fun brand.

*nothing but*  
**FUN  
TOYS**

211613

### Lights & Sounds Shape Sorter

Measurements: 11.2" x 2.8" x 11"

Case Pack: 6



211612

### Lights & Sounds Choo Choo Train

Measurements: 11.4" x 3.9" x 9.1"

Case Pack: 6



211374

### Lights & Sounds Pound N' Play

Measurements: 11.2" x 5.7" x 5.5"

Case Pack: 6



TOPSELLER

211216

### Sparkle & Roll Ball Tower

Measurements: 10.2" x 4.7" x 12"

Case Pack: 6





**NEW**

**233890**

**My First Teether & Rattles Set**

Measurements: 16.14" x 2.95" x 12.40"

Case Pack: 6

3m+



**211361**

**Tower of Fun Stacking Cups**

Measurements: 10.2" x 3.5" x 7.3"

Case Pack: 6

6m+



**TOPSELLER**

**211209**

**Shape Sorter Eggs**

Measurements: 11.6" x 4.3" x 3"

Case Pack: 6

12m+



**211196**

**Fun Time Telephone**

Measurements: 8.7" x 2.8" x 8.7"

Case Pack: 6



**211058**

**Let's Pretend Tool Belt**

Measurements: 9.1" x 2.8" x 6.5"

Case Pack: 6



**TOPSELLER**

**211050**

**Let's Pretend Play Purse**

Measurements: 9.1" x 2.8" x 6.5"

Case Pack: 6



**221069**

**Let's Pretend Vanity Playset**

Measurements: 4.5" x 10.2" x 12.4"

Case Pack: 6



**RETIRED**  
Order While  
Supplies Last.





**NEW** **233887**  
**My First Rock & Roll Guitar**

Measurements: 18.11" x 7.52" x 2.64"  
Case Pack: 6

24m+



**NEW** **233889**  
**My First Xylophone**

Measurements: 13.19" x 1.65" x 7.48"  
Case Pack: 6

24m+



**NEW** **233888**  
**My First Drum Set**

Measurements: 10.83" x 4.45" x 11.02"  
Case Pack: 6

24m+



**TOPSELLER**

**211733**  
**Big Band Music Mat**

Measurements: 10.6" x 2.0" x 9.8"  
Case Pack: 6

12m+



**TOPSELLER** **211234**  
**My First Coffee Maker**

Measurements: 10.4" x 5.6" x 9.6"

Case Pack: 6



**211237**  
**My First Dishwasher**

Measurements: 7.1" x 6.8" x 9.7"

Case Pack: 4



**211195**  
**My First Dinner Ware**

Measurements: 11.9" x 3.3" x 13.8"

Case Pack: 6





**211193**

**My First Vacuum Cleaner**

Measurements: 18.4" x 5.0" x 6.7"

Case Pack: 6



**211235**

**My First Microwave**

Measurements: 11.0" x 7.1" x 7.1"

Case Pack: 4



**211232**

**My First Toaster**

Measurements: 7.2" x 4.1" x 6.9"

Case Pack: 6



**NEW**

**233771**

**Rainbow Diamond Kite (6 unit display)**

Measurements: 5.512" x 1.181" x 17.323"

Case Pack: 1

3+



842446 107710



**211802**

**Light Up Stomp Rockets**

Measurements: 10.6" x 2.4" x 10.6"

Case Pack: 6

3+



842446 108021



**211104**

**Lights & Sounds Pogo Jumper**

Measurements: 5.5" x 4.9" x 10.2"

Case Pack: 6

3+



842446 101046



**211080**

**Light Up Flying Saucer**

Measurements: 10.4" x 2.4" x 10.4"

Case Pack: 6

5+



842446 100803



**RETIRED**  
Order While  
Supplies Last.



**201714**

**Spinning Turtle Sprinkler**

Measurements: 7.9" x 8.1" x 4.2"

Case Pack: 6



**222176**

**Splash and Dig Beach Set**

Measurements: 7.5" x 7.5" x 13.4"

Case Pack: 6

24m+



**201706**

**Let's Garden Wagon**

Measurements: 15.9" x 11.8" x 8.7"

Case Pack: 3



**211732**

**Giant Boomer Badminton Set**

Measurements: 28.4" x 12.8" x 3.1"

Case Pack: 6



NEW

233963

### The Amazing Glowing Stars Collection

Measurements: 5.51" x 2.76" x 6.69"  
Case Pack: 6

3+



NEW

233711

### Scratch Art Collection (24 unit display)

Measurements: 5.512" x 0" x 7.48"  
Case Pack: 1

3+



211801

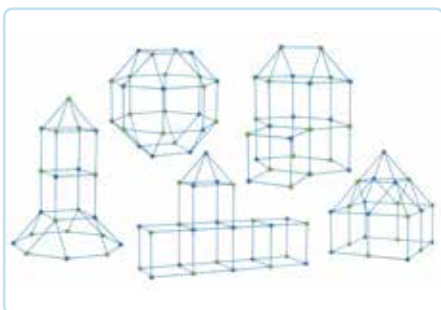
### Rainbow Light Up Fort

Measurements: 16.7" x 3.3" x 9.6"  
Case Pack: 4

4+



incl.





Categories:

● S

● M

● L

● XL

● XXL

● Deluxe 1

○ Deluxe 2

**387222**

**Texas Longhorn Bull**

More on page 65.



**MOJO** is a toy figurine brand with a full range of products from Farm & Horses, International Wildlife, Dinosaur-Prehistoric to Fantasy Collections. Hand painted, highly detailed and true to life, educational quality toy figurines.



**the fun is here**

# FARMLAND & HORSE WORLD

Animal and play figurines are indispensable additions for play farms and horse stalls. Particularly popular as last-minute purchase products, they provide an opportunity to continue expanding the collection.



● **381059**

## Brumby Mare

Measurements: 3.1" x 2.0" x 5.9"  
Case Pack: 3

3+



● **387390**

## Hanoverian Bay

Measurements: 6.5" x 1.4" x 4.1"  
Case Pack: 3

3+



● **387241**

## Hanoverian Black

Measurements: 6.5" x 1.4" x 4.1"  
Case Pack: 3

3+



● **381018**

## Hanoverian Foal Bay

Measurements: 3.3" x 1.0" x 3.1"  
Case Pack: 3

3+



● **381000**

## Hanoverian Foal Black

Measurements: 3.0" x 1.0" x 3.1"  
Case Pack: 3

3+



● **387072**

## Hanoverian Foal

Measurements: 4.1" x 1.2" x 2.8"  
Case Pack: 3

3+





● **381001**

**Lusitano Bay**

Measurements: 6.0" x 1.5" x 3.7"

Case Pack: 3

3+



● **381002**

**Lusitano White**

Measurements: 6.0" x 1.5" x 3.7"

Case Pack: 3

3+



● **387395**

**Morgan Stallion Palomino**

Measurements: 5.6" x 1.2" x 3.5"

Case Pack: 3

3+



● **381021**

**Morgan Stallion Bay**

Measurements: 5.6" x 1.2" x 3.5"

Case Pack: 3

3+



● **387084**

**Arabian Stallion Chestnut**

Measurements: 5.5" x 1.6" x 4.7"

Case Pack: 3

3+



● **387069**

**Arabian Stallion Black**

Measurements: 5.3" x 1.8" x 4.7"

Case Pack: 3

3+



**NEW 380064 Western Ranch Corral**

Measurements: 19.00" x 16.50" x 8.30"

Case Pack: 4

3+



● **387194**

**Arabian Mare in Foal**

Measurements: 4.7" x 1.8" x 4.1"  
Case Pack: 3

3+



● **381015**

**Arabian Foal Black**

Measurements: 3.5" x 1.3" x 3.1"  
Case Pack: 3

3+



● **381019**

**Arabian Foal Chestnut**

Measurements: 3.5" x 1.3" x 3.1"  
Case Pack: 3

3+



● **387151**

**Quarter Horse Sooty Bay**

Measurements: 6.5" x 1.6" x 3.9"  
Case Pack: 3

3+



● **387121**

**Quarter Horse Buckskin**

Measurements: 6.5" x 1.6" x 3.9"  
Case Pack: 3

3+



● **387150**

**Appaloosa Stallion Chestnut Blanket**

Measurements: 5.3" x 1.8" x 4.1"  
Case Pack: 3

3+



● **387350**

**Trakehner**

Measurements: 4.9" x 1.4" x 4.3"  
Case Pack: 3

3+



● **387294**

**Dutch Warmblood**

Measurements: 4.9" x 1.4" x 4.3"  
Case Pack: 3

3+



● **387291**

**Thoroughbred**

Measurements: 6.7" x 1.4" x 4.3"  
Case Pack: 3

3+



● **387149**

**Andalusian Grey**

Measurements: 5.5" x 1.8" x 4.3"  
Case Pack: 3

3+



● **387109**

**Andalusian Black**

Measurements: 5.5" x 1.6" x 4.1"  
Case Pack: 3

3+



● **387281**

**Friesian Mare**

Measurements: 5.7" x 2.0" x 4.3"  
Case Pack: 3

3+





● **387240**

**Friesian Gelding**

Measurements: 4.9" x 1.4" x 4.3"

Case Pack: 3

3+



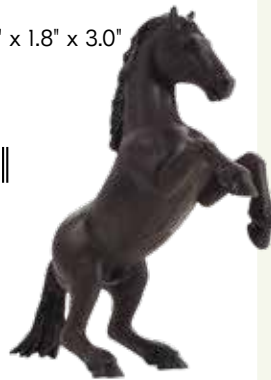
● **387359**

**Mustang Black - Rearing**

Measurements: 5.7" x 1.8" x 3.0"

Case Pack: 3

3+



● **387351**

**Mustang White - Rearing**

Measurements: 3.5" x 1.8" x 5.1"

Case Pack: 3

3+



● **387396**

**Percheron**

Measurements: 4.8" x 1.7" x 4.3"

Case Pack: 3

3+



● **387074**

**Lipizzaner Mare**

Measurements: 5.9" x 1.6" x 3.7"

Case Pack: 3

3+



● **387085**

**Clydesdale Horse Black and White**

Measurements: 5.5" x 1.8" x 4.1"

Case Pack: 3

3+



● **387070**

**Clydesdale Horse Brown**

Measurements: 5.9" x 1.6" x 4.1"

Case Pack: 3

3+



● **387290**

**Shire Horse**

Measurements: 5.3" x 1.6" x 4.7"

Case Pack: 3

3+



● **387399**

**Shire Foal**

Measurements: 3.0" x 1.5" x 3.1"

Case Pack: 3

3+



● **387196**

**Suffolk Punch Foal**

Measurements: 4.3" x 1.0" x 3.0"

Case Pack: 3

3+



● **387195**

**Suffolk Punch Mare**

Measurements: 5.5" x 2.0" x 4.3"

Case Pack: 3

3+



● **387219**

**Tinker Yearling**

Measurements: 5.3" x 1.6" x 3.1"

Case Pack: 3

3+



● **381060**

**Brumby Stallion**

Measurements: 5.1" x 1.6" x 4.1"  
Case Pack: 3

3+



● **387148**

**Fjord Mare**

Measurements: 4.5" x 1.6" x 3.1"  
Case Pack: 3

3+



● **387378**

**Orlov Trotter Dapple Grey**

Measurements: 5.1" x 2.2" x 4.7"  
Case Pack: 3

3+



● **387218**

**Tinker Mare**

Measurements: 6.3" x 1.6" x 3.9"  
Case Pack: 3

3+



● **381006**

**Gypsy Vanner Stallion**

Measurements: 4.7" x 1.7" x 4.5"  
Case Pack: 3

3+



● **387108**

**Appaloosa Stallion**

Measurements: 5.3" x 1.8" x 4.1"  
Case Pack: 3

3+



● **387232**

**Shetland Foal**

Measurements: 2.4" x 1.0" x 2.0"  
Case Pack: 3

3+



● **387231**

**Shetland Pony**

Measurements: 4.7" x 1.4" x 2.4"  
Case Pack: 3

3+



● **387282**

**Welsh Pony**

Measurements: 4.7" x 1.2" x 3.1"  
Case Pack: 3

3+





● **387062**

**Holstein Cow**

Measurements: 5.5" x 2.0" x 3.1"

Case Pack: 3

3+



● **387061**

**Holstein Calf - Standing**

Measurements: 3.1" x 1.2" x 1.8"

Case Pack: 3

3+



● **387224**

**Spanish Bull**

Measurements: 5.9" x 2.2" x 3.3"

Case Pack: 3

3+



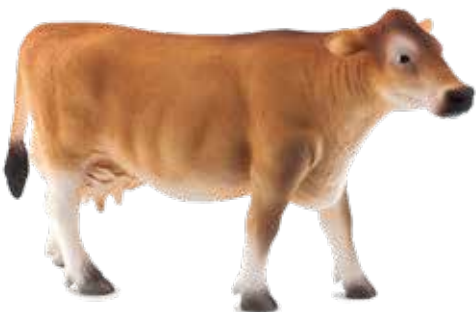
● **387117**

**Jersey Cow**

Measurements: 5.5" x 1.6" x 3.0"

Case Pack: 3

3+



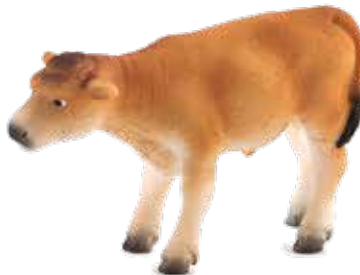
● **387147**

**Jersey Calf - Standing**

Measurements: 3.0" x 1.0" x 1.6"

Case Pack: 3

3+



● **387220**

**Simmental Cow**

Measurements: 5.1" x 2.4" x 3.3"

Case Pack: 3

3+



● **387199**

**Highland Cow**

Measurements: 5.1" x 3.0" x 3.9"

Case Pack: 3

3+



● **387202**

**Highland Calf**

Measurements: 2.8" x 0.8" x 2.0"

Case Pack: 3

3+



● **387222**

**Texas Longhorn Bull**

Measurements: 5.1" x 2.4" x 3.3"

Case Pack: 3

3+



**NEW**

**● 381064**  
**Romney Sheep Ewe**

Measurements: 3.30" x 1.20" x 2.80"  
Case Pack: 3

3+



**NEW**

**● 381063**  
**Romney Sheep Ram**

Measurements: 3.40" x 1.20" x 2.80"  
Case Pack: 3

3+



**NEW**

**● 381065**  
**Romney Sheep Lamb Standing**

Measurements: 2.20" x 1.00" x 2.00"  
Case Pack: 3

3+



**NEW**

**● 381066**  
**Romney Sheep Lamb Running**

Measurements: 2.60" x 1.40" x 1.20"  
Case Pack: 3

3+



**● 387096**  
**Sheep (Ewe)**

Measurements: 3.9" x 1.2" x 2.6"  
Case Pack: 3

3+



**RETIRED**  
Order While  
Supplies Last.



**● 387097**  
**Sheep (Ram)**

Measurements: 3.9" x 1.2" x 3.1"  
Case Pack: 3

3+



**RETIRED**  
Order While  
Supplies Last.



**● 387098**  
**Lamb - Standing**

Measurements: 2.6" x 1.0" x 2.0"  
Case Pack: 3

3+



**RETIRED**  
Order While  
Supplies Last.



**● 387058**  
**Black Faced Sheep (Ewe)**

Measurements: 3.9" x 1.2" x 2.8"  
Case Pack: 3

3+



**RETIRED**  
Order While  
Supplies Last.



**● 387081**  
**Black Faced Sheep (Ram)**

Measurements: 3.9" x 1.4" x 3.1"  
Case Pack: 3

3+



**RETIRED**  
Order While  
Supplies Last.





**● 387059**  
**Black Faced Lamb - Standing**

Measurements: 2.4" x 0.8" x 1.8"  
Case Pack: 3

3+



**RETIRED**  
Order While  
Supplies Last.



**● 387060**  
**Black Faced Lamb - Lying Down**

Measurements: 2.6" x 1.4" x 1.2"  
Case Pack: 3

3+



**RETIRED**  
Order While  
Supplies Last.



**● 387077**  
**Billy Goat**

Measurements: 3.9" x 1.2" x 3.1"  
Case Pack: 3

3+



**● 387397**  
**Donkey**

Measurements: 4.3" x 1.0" x 3.1"  
Case Pack: 3

3+



**● 387398**  
**Donkey Foal**

Measurements: 2.4" x 0.6" x 2.6"  
Case Pack: 3

3+



**● 387054**  
**Pig (Sow)**

Measurements: 3.9" x 1.2" x 1.8"  
Case Pack: 3

3+



**● 387080**  
**Pig (Boar)**

Measurements: 3.9" x 1.2" x 1.8"  
Case Pack: 3

3+



**● 387056**  
**Piglet - Feeding**

Measurements: 2.0" x 0.6" x 1.0"  
Case Pack: 3

3+



**● 387055**  
**Piglet**

Measurements: 2.2" x 0.8" x 1.2"  
Case Pack: 3

3+



● **387053**

**Hen - Eating**

Measurements: 2.0" x 1.0" x 1.8"  
Case Pack: 3

3+



● **387052**

**Hen - Standing**

Measurements: 1.8" x 1.0" x 2.0"  
Case Pack: 3

3+



● **387051**

**Cockerel**

Measurements: 2.4" x 1.0" x 2.4"  
Case Pack: 3

3+



● **387285**

**Male Turkey**

Measurements: 2.2" x 1.8" x 2.6"  
Case Pack: 3

3+



● **387127**

**Mallard Duck Male**

Measurements: 2.4" x 1.2" x 2.0"  
Case Pack: 3

3+



● **387377**

**Goose**

Measurements: 3.4" x 1.5" x 3.2"  
Case Pack: 3

3+



● **381039**

**Grey Goose**

Measurements: 3.4" x 1.5" x 3.2"  
Case Pack: 3

3+



● **387065**

**Mute Swan**

Measurements: 3.9" x 1.6" x 2.6"  
Case Pack: 3

3+



● **387292**

**Budgerigar (Blue)**

Measurements: 3.0" x 0.8" x 1.6"  
Case Pack: 3

3+



● **387262**

**Budgerigar (Green)**

Measurements: 3.0" x 0.8" x 1.6"  
Case Pack: 3

3+



● **387235**

**Mouse**

Measurements: 2.6" x 1.2" x 1.2"  
Case Pack: 3

3+



● **387236**

**Hamster**

Measurements: 2.4" x 0.8" x 1.0"  
Case Pack: 3

3+





**● 381053**  
**English Bulldog**

Measurements: 2.4" x 1.3" x 2.1"  
Case Pack: 3

3+



5 031923 810532



**● 387260**  
**German Shepherd**

Measurements: 4.9" x 1.2" x 3.0"  
Case Pack: 3

3+



5 031923 872608



**● 387261**  
**German Shepherd Puppy**

Measurements: 3.1" x 0.8" x 1.6"  
Case Pack: 3

3+



5 031923 872615



**● 387271**  
**Labrador**

Measurements: 3.9" x 1.2" x 3.0"  
Case Pack: 3

3+



5 031923 872714



**● 387272**  
**Labrador Puppy**

Measurements: 2.4" x 1.2" x 1.2"  
Case Pack: 3

3+



5 031923 872721



**● 387198**  
**Golden Retriever**

Measurements: 4.3" x 1.2" x 2.8"  
Case Pack: 3

3+



5 031923 871984



**● 387140**  
**Shiba Inu**

Measurements: 2.6" x 1.0" x 2.8"  
Case Pack: 3

3+



5 031923 871403



**● 387363**  
**Shiba Inu Black**

Measurements: 3.0" x 1.0" x 2.8"  
Case Pack: 3

3+



5 031923 873636



**● 387205**  
**Golden Retriever Puppy**

Measurements: 3.1" x 1.0" x 2.2"  
Case Pack: 3

3+



5 031923 872059



● **387286**

**Jack Russell Terrier**

Measurements: 2.8" x 0.8" x 2.2"

Case Pack: 3

3+



● **387249**

**Dalmatian Puppy**

Measurements: 2.0" x 1.2" x 2.0"

Case Pack: 3

3+



● **387248**

**Dalmatian**

Measurements: 3.7" x 1.2" x 2.8"

Case Pack: 3

3+



● **387203**

**Border Collie**

Measurements: 3.0" x 1.2" x 2.2"

Case Pack: 3

3+



● **387367**

**Cat Black & White - Lying**

Measurements: 3.0" x 1.6" x 1.2"

Case Pack: 3

3+



● **387200**

**Cat Black & White**

Measurements: 3.0" x 1.2" x 2.6"

Case Pack: 3

3+



● **387371**

**Cat Black & White - Sitting**

Measurements: 1.6" x 1.2" x 1.6"

Case Pack: 3

3+



● **387283**

**Cat Ginger Tabby**

Measurements: 3.1" x 0.8" x 2.4"

Case Pack: 3

3+



● **387372**

**Cat Black - Sitting**

Measurements: 1.6" x 1.2" x 1.6"

Case Pack: 3

3+





**387142**  
**Rabbit - Lying**

Measurements: 2.6" x 0.8" x 1.4"  
Case Pack: 3

3+



**387141**  
**Rabbit - Sitting**

Measurements: 1.0" x 0.8" x 2.0"  
Case Pack: 3

3+



**NEW**

**380051**  
**Horse World Large Blind Bag**

**18 Count Display**

Measurements: 7.00" x 1.40" x 8.50"  
Case Pack: 1

3+



**NEW**

**380037**  
**Farmland Animals Box Set 1**

Measurements: 9.64" x 3.14" x 7.48"  
Case Pack: 4

3+



**NEW**

**380043**  
**Farmland Animals Large Blind Bag**

**24 Count Display**

Measurements: 6.3" x 1.4" x 7.4"  
Case Pack: 1

3+



**NEW**

**380038**  
**Farmland Animals Box Set 2**

Measurements: 9.64" x 3.14" x 7.48"  
Case Pack: 4

3+



**NEW**

**380042**  
**Farmland Animals Blind Bag**

Measurements: 5.0" x 1.1" X 6.1"  
Case Pack: 1

3+





# WILDLIFE

Playtime fun and learning together as one! With a large selection of wild animals, children will playfully learn about the inhabitants of the wilderness, the savannah, and the forest. They're for admiring, collecting, and playing!

● **387013**

## White Tiger

Measurements: 6.1" x 1.6" x 2.6"

Case Pack: 3

3+



● **387014**

## White Tiger Cub - Standing

Measurements: 2.8" x 1.6" x 1.2"

Case Pack: 3

3+



● **387015**

## White Tiger Cub - Lying Down

Measurements: 2.8" x 1.6" x 1.2"

Case Pack: 3

3+



● **387009**

## Tiger Cub - Lying Down

Measurements: 2.8" x 1.6" x 1.2"

Case Pack: 3

3+



● **387008**

## Tiger Cub - Standing

Measurements: 3.0" x 1.0" x 1.8"

Case Pack: 3

3+



● **387003**

## Bengal Tiger

Measurements: 6.3" x 1.6" x 2.6"

Case Pack: 3

3+



● **387197**

## Male Cheetah

Measurements: 5.9" x 1.2" x 2.4"

Case Pack: 3

3+



● **387167**

## Cheetah Female with Cub

Measurements: 5.5" x 1.2" x 2.4"

Case Pack: 3

3+



● **387064**

## Iberian Lynx

Measurements: 3.5" x 0.8" x 1.6"

Case Pack: 3

3+





**387011**  
**Lion Cub - Standing**

Measurements: 3.1" x 1.2" x 1.8"  
Case Pack: 3

3+



**387012**  
**Lion Cub - Playing**

Measurements: 1.8" x 1.4" x 1.8"  
Case Pack: 3

3+



**387175**  
**Lioness**

Measurements: 5.5" x 1.2" x 2.4"  
Case Pack: 3

3+



**387207**  
**White Lioness**

Measurements: 5.3" x 1.2" x 2.2"  
Case Pack: 3

3+



**387206**  
**White Male Lion**

Measurements: 5.5" x 1.6" x 2.4"  
Case Pack: 3

3+



**387204**  
**Male Lion**

Measurements: 5.5" x 1.2" x 2.8"  
Case Pack: 3

3+



**387143**  
**Mountain Lion**

Measurements: 6.1" x 1.2" x 2.2"  
Case Pack: 3

3+



**387017**  
**Black Panther**

Measurements: 5.3" x 1.2" x 2.4"  
Case Pack: 3

3+



**387089**  
**Hyena**

Measurements: 3.9" x 1.4" x 2.6"  
Case Pack: 3

3+



● **387018**

**Leopard**

Measurements: 5.5" x 1.2" x 2.2"  
Case Pack: 3

3+



● **387172**

**Clouded Leopard**

Measurements: 4.5" x 0.8" x 1.8"  
Case Pack: 3

3+



● **387243**

**Snow Leopard**

Measurements: 6.0" x 1.7" x 2.2"  
Case Pack: 3

3+



● **381031**

**Warthog**

Measurements: 4.1" x 1.3" x 2.8"  
Case Pack: 3

3+

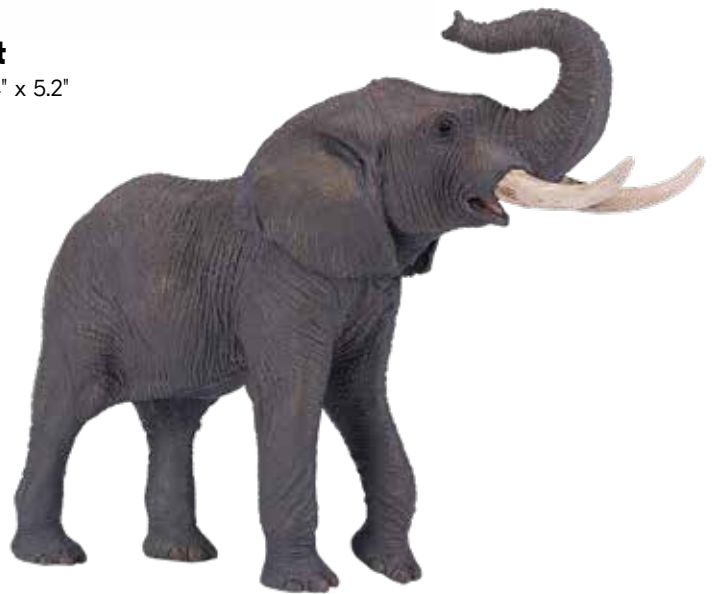


● **381005**

**African Elephant**

Measurements: 6.9" x 2.4" x 5.2"  
Case Pack: 3

3+



● **387190**

**African Elephant Calf**

Measurements: 3.3" x 1.0" x 1.8"  
Case Pack: 3

3+



● **387266**

**Asian Elephant**

Measurements: 4.5" x 2.0" x 3.1"  
Case Pack: 3

3+



● **387002**

**African Elephant Calf**

Measurements: 3.3" x 2.0" x 2.2"  
Case Pack: 3

3+





● **381008**  
**Giraffe Male**

Measurements: 5.1" x 2.4" x 6.7"  
Case Pack: 3

3+



● **381033**  
**Giraffe Female**

Measurements: 5.6" x 1.7" x 4.9"  
Case Pack: 3

3+



● **381034**  
**Giraffe Calf**

Measurements: 2.6" x 1.5" x 4.1"  
Case Pack: 3

3+



● **387393**  
**Zebra Mare**

Measurements: 4.5" x 1.6" x 3.7"  
Case Pack: 3

3+



● **387169**  
**Zebra**

Measurements: 4.7" x 1.6" x 3.5"  
Case Pack: 3

3+



● **387394**  
**Zebra Foal**

Measurements: 2.4" x 1.0" x 2.8"  
Case Pack: 3

3+



● **387247**  
**Rhino Baby**

Measurements: 2.8" x 0.8" x 2.2"  
Case Pack: 3

3+



● **387257**  
**Rhino Baby - Sitting**

Measurements: 2.4" x 1.4" x 2.6"  
Case Pack: 3

3+



● **387103**  
**White Rhinoceros**

Measurements: 5.5" x 1.6" x 2.4"  
Case Pack: 3

3+



● **387104**

**Hippopotamus Female**

Measurements: 5.5" x 1.8" x 2.4"

Case Pack: 3

3+



● **387246**

**Hippo Baby**

Measurements: 3.0" x 0.8" x 1.2"

Case Pack: 3

3+



● **387110**

**African Painted Dog**

Measurements: 4.3" x 0.8" x 2.4"

Case Pack: 3

3+



● **381055**

**Fennec Fox**

Measurements: 2.8" x 0.9" x 1.7"

Case Pack: 3

3+



● **387242**

**Arabian Oryx**

Measurements: 4.7" x 1.6" x 4.1"

Case Pack: 3

3+



● **387145**

**Giant Sable Antelope**

Measurements: 4.3" x 1.2" x 4.1"

Case Pack: 3

3+



**NEW**

● **381029**

**Aardvark**

Measurements: 3.50" x 1.10" x 0.80"

Case Pack: 3

3+



● **387125**

**Meerkat**

Measurements: 1.4" x 0.8" x 2.6"

Case Pack: 3

3+



● **387176**

**Proboscis Monkey**

Measurements: 4.9" x 1.4" x 2.2"

Case Pack: 3

3+





● **387264**

**Chimpanzee and Baby**

Measurements: 3.5" x 1.8" x 3.2"

Case Pack: 3

3+



● **387265**

**Chimpanzee**

Measurements: 2.4" x 2.4" x 3.0"

Case Pack: 3

3+



● **381003**

**Gorilla Silverback**

Measurements: 3.4" x 2.0" x 3.6"

Case Pack: 3

3+



● **381004**

**Gorilla Female**

Measurements: 2.2" x 1.7" x 3.2"

Case Pack: 3

3+



**NEW**

● **381028**

**Orangutan**

Measurements: 1.70" x 2.80" x 2.80"

Case Pack: 3

3+



● **387182**

**Black Crested Macaque**

Measurements: 3.1" x 1.4" x 2.4"

Case Pack: 3

3+



● **387177**

**Ringtail Lemur**

Measurements: 2.8" x 1.4" x 2.8"

Case Pack: 3

3+



● **387237**

**Lemur with Baby**

Measurements: 2.8" x 0.6" x 3.0"

Case Pack: 3

3+



● **387391**

**Llama**

Measurements: 3.9" x 1.1" x 4.2"  
Case Pack: 3

3+



● **387392**

**Llama Baby**

Measurements: 2.2" x 0.8" x 3.4"  
Case Pack: 3

3+



● **387113**

**Arabian Camel**

Measurements: 5.5" x 1.4" x 4.7"  
Case Pack: 3

3+



● **387239**

**Capybara**

Measurements: 3.0" x 1.0" x 2.0"  
Case Pack: 3

3+



● **381023**

**Brazilian Tapir**

Measurements: 3.9" x 1.2" x 2.4"  
Case Pack: 3

3+



● **387180**

**Two Toed Sloth**

Measurements: 2.2" x 1.4" x 2.4"  
Case Pack: 3

3+



● **387170**

**Gaur Bull**

Measurements: 5.3" x 1.6" x 4.3"  
Case Pack: 3

3+



**NEW**

● **381076**

**American Bison / Buffalo**

Measurements: 4.3" x 1.6" x 2.8"  
Case Pack: 3

3+



● **387111**

**Cape Buffalo**

Measurements: 5.5" x 1.6" x 2.8"  
Case Pack: 3

3+





● **381010**

**Kangaroo**

Measurements: 4.9" x 1.7" x 3.9"

Case Pack: 3

3+



● **387105**

**Koala Bear**

Measurements: 2.6" x 1.2" x 2.4"

Case Pack: 3

3+



● **381058**

**Tasmanian Devil**

Measurements: 2.8" x 0.8" x 1.6"

Case Pack: 3

3+



**NEW**

● **381035**

**Giant Anteater**

Measurements: 5.90" x 1.40" x 1.90"

Case Pack: 3

3+



● **387159**

**Raccoon**

Measurements: 3.1" x 0.8" x 1.4"

Case Pack: 3

3+



● **387376**

**Red Panda**

Measurements: 2.4" x 1.1" x 1.7"

Case Pack: 3

3+



● **387173**

**Sun Bear**

Measurements: 1.8" x 2.2" x 3.3"

Case Pack: 3

3+



● **387238**

**Panda Baby**

Measurements: 2.6" x 1.2" x 1.4"

Case Pack: 3

3+



● **387171**

**Giant Panda**

Measurements: 3.9" x 2.0" x 2.4"

Case Pack: 3

3+

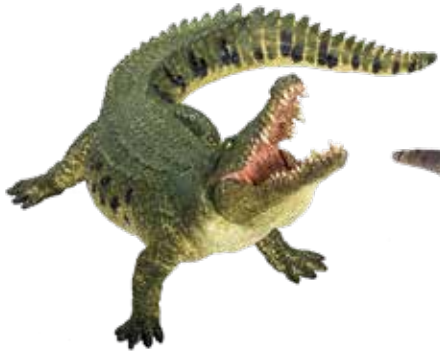


● **387162**

**Crocodile with Moving Jaw**

Measurements: 6.1" x 4.9" x 3.0"  
Case Pack: 3

3+



● **381011**

**Komodo Dragon**

Measurements: 8.1" x 2.2" x 1.6"  
Case Pack: 3

3+



● **387168**

**Alligator**

Measurements: 8.3" x 2.8" x 2.2"  
Case Pack: 3

3+



● **381061**

**Perentie Lizard**

Measurements: 5.9" x 1.8" x 1.2"  
Case Pack: 3

3+



● **387259**

**Giant Turtle**

Measurements: 3.1" x 2.0" x 1.4"  
Case Pack: 3

3+



● **387174**

**Indian Pangolin**

Measurements: 4.9" x 1.0" x 1.4"  
Case Pack: 3

3+



● **387268**

**Rattlesnake**

Measurements: 3.0" x 2.8" x 1.2"  
Case Pack: 3

3+



● **387126**

**King Cobra**

Measurements: 2.4" x 2.4" x 2.4"  
Case Pack: 3

3+



● **387251**

**Coral Snake**

Measurements: 5.1" x 1.2" x 0.8"  
Case Pack: 3

3+





**NEW** ● **381007**  
**Anaconda**

Measurements: 6.90" x 2.80" x 1.40"  
Case Pack: 3

3+



● **387213**  
**Red Kneed Tarantula**

Measurements: 2.8" x 3.0" x 1.2"  
Case Pack: 3

3+



● **387133**  
**Emperor Scorpion**

Measurements: 3.9" x 3.0" x 2.4"  
Case Pack: 3

3+



● **387129**  
**Chameleon**

Measurements: 4.3" x 2.0" x 1.6"  
Case Pack: 3

3+



● **387299**  
**Red Eyed Tree Frog**

Measurements: 2.0" x 2.0" x 0.8"  
Case Pack: 3

3+



● **381016**  
**Poison Dart Tree Frog**

Measurements: 2.0" x 2.0" x 0.8"  
Case Pack: 3

3+



● **387134**  
**American Flamingo**

Measurements: 2.6" x 1.5" x 4.3"  
Case Pack: 3

3+



● **387263**  
**Parrot**

Measurements: 3.5" x 3.9" x 3.5"  
Case Pack: 3

3+



**NEW** ● **381037**  
**Toucan**

Measurements: 2.50" x 2.40" x 1.20"  
Case Pack: 3

3+



● **387165**

**Griffon Vulture**

Measurements: 3.7" x 2.4" x 2.6"  
Case Pack: 3

3+



● **387027**

**American Bald Eagle**

Measurements: 5.5" x 3.1" x 2.0"  
Case Pack: 3

3+



● **387284**

**Great Horned Owl**

Measurements: 2.6" x 4.3" x 2.4"  
Case Pack: 3

3+



● **381056**

**Peregrine Falcon**

Measurements: 2.4" x 1.1" x 2.1"  
Case Pack: 3

3+



● **381051**

**Golden Eagle**

Measurements: 5.6" x 2.2" x 2.8"  
Case Pack: 3

3+



● **387216**

**Grizzly Bear**

Measurements: 4.5" x 1.8" x 2.6"  
Case Pack: 3

3+



● **387217**

**Grizzly Bear Cub**

Measurements: 1.6" x 1.4" x 2.2"  
Case Pack: 3

3+



● **387112**

**American Black Bear**

Measurements: 4.5" x 2.6" x 2.4"  
Case Pack: 3

3+



● **387287**

**Black Bear Cub**

Measurements: 2.4" x 1.0" x 1.8"  
Case Pack: 3

3+





● **381054**

**Barn Owl**

Measurements: 1.7" x 1.1" x 1.9"  
Case Pack: 3

3+



● **387201**

**Snowy Owl**

Measurements: 2.0" x 1.0" x 2.2"  
Case Pack: 3

3+



● **381052**

**Arctic Wolf**

Measurements: 3.7" x 1.1" x 2.1"  
Case Pack: 3

3+



● **387023**

**European Elk / Moose**

Measurements: 4.7" x 3.0" x 4.1"  
Case Pack: 3

3+



● **387186**

**Reindeer**

Measurements: 4.7" x 1.8" x 5.3"  
Case Pack: 3

3+



● **387188**

**Reindeer Calf**

Measurements: 3.0" x 1.2" x 2.2"  
Case Pack: 3

3+



● **387185**

**White Tailed Deer Doe**

Measurements: 4.1" x 1.4" x 3.3"  
Case Pack: 3

3+



● **387038**

**White Tailed Deer Buck**

Measurements: 4.7" x 2.8" x 4.9"  
Case Pack: 3

3+



● **387036**

**White Tailed Deer Fawn**

Measurements: 2.4" x 0.6" x 2.0"  
Case Pack: 3

3+



● **387026**

**Timber Wolf - Walking**

Measurements: 3.9" x 1.2" x 2.0"  
Case Pack: 3

3+



● **387244**

**Wolf Cub**

Measurements: 2.2" x 1.0" x 1.6"  
Case Pack: 3

3+



● **387025**

**Timber Wolf - Standing**

Measurements: 4.3" x 1.2" x 2.8"  
Case Pack: 3

3+



● **387245**

**Wolf - Howling**

Measurements: 3.1" x 1.2" x 3.1"  
Case Pack: 3

3+



● **387160**

**Wild Boar Male**

Measurements: 4.3" x 1.4" x 2.4"  
Case Pack: 3

3+



**NEW**

● **381030**

**Badger**

Measurements: 2.80" x 1.00" x 1.40"  
Case Pack: 3

3+



● **387034**

**Skunk**

Measurements: 2.8" x 0.8" x 1.6"  
Case Pack: 3

3+



● **387181**

**Honey Badger Male**

Measurements: 3.1" x 0.8" x 1.6"  
Case Pack: 3

3+



● **387033**

**Badger**

Measurements: 2.8" x 1.0" x 1.2"  
Case Pack: 3

3+



**RETIRED**

Order While  
Supplies Last.



● **387028**

**Red Fox**

Measurements: 2.8" x 0.8" x 2.0"  
Case Pack: 3

3+



● **387164**

**Ermine**

Measurements: 3.3" x 0.6" x 1.4"  
Case Pack: 3

3+



● **387187**

**Stoat**

Measurements: 3.3" x 0.6" x 1.4"  
Case Pack: 3

3+



● **387106**

**Duck Billed Platypus**

Measurements: 2.8" x 1.2" x 0.8"  
Case Pack: 3

3+



● **387128**

**Common Otter**

Measurements: 3.7" x 0.8" x 1.2"  
Case Pack: 3

3+



● **387078**

**Beaver**

Measurements: 3.3" x 1.2" x 1.2"  
Case Pack: 3

3+



● **387032**

**Squirrel - Running**

Measurements: 2.8" x 0.8" x 1.4"  
Case Pack: 3

3+



● **387031**

**Squirrel - Standing**

Measurements: 1.6" x 0.6" x 2.0"  
Case Pack: 3

3+



● **387035**

**Hedgehog**

Measurements: 1.8" x 1.2" x 1.0"  
Case Pack: 3

3+



**NEW**

**380045  
Wildlife Animals Blind Bag**

**24 Count Display**

Measurements: 1.1" x 5.0" x 6.1"  
Case Pack: 1

3+



**NEW**

**380046  
Wildlife Animals Large Blind Bag**

**24 Count Display**

Measurements: 6.3" x 1.4" x 7.4"  
Case Pack: 1

3+



**NEW**

**380035  
Wildlife Animals Box Set 1-  
African Wildlife**

Measurements: 9.64" x 3.14" x 7.48"  
Case Pack: 4

3+



**NEW**

**380036  
Wildlife Animals Box Set 2-  
Woodland Wildlife**

Measurements: 9.64" x 3.14" x 7.48"  
Case Pack: 4

3+





# SEALIFE

Dive into the deep blue sea! With this large selection of sea creatures, children will playfully learn about the diverse animals populations of the oceans. Great for playing and collecting, these maritime animal action figures encourage impulse purchases at small RRP's.



● **387279**

## White Shark Large

Measurements: 7.9" x 3.9" x 2.8"

Case Pack: 3

3+



● **381012**

## Great White Shark

Measurements: 7.3" x 3.1" x 2.2"

Case Pack: 3

3+



● **387355**

## Bull Shark Deluxe

Measurements: 6.5" x 3.5" x 2.0"

Case Pack: 3

3+



● **387270**

## Bull Shark

Measurements: 6.5" x 2.8" x 2.0"

Case Pack: 3

3+



NEW

● **381038**

## Whale Shark

Measurements: 8.70" x 4.50" x 3.00"

Case Pack: 3

3+



● **387357**

## Black Tip Reef Shark

Measurements: 6.7" x 3.1" x 1.6"

Case Pack: 3

3+



● **387118**

## Bottle Nose Dolphin

Measurements: 5.1" x 2.0" x 1.8"

Case Pack: 3

3+



● **387358**

**Common Dolphin**

Measurements: 4.7" x 2.0" x 1.4"

Case Pack: 3

3+



○ **387210**

**Sperm Whale**

Measurements: 1.2" x 3.9" x 3.5"

Case Pack: 3

3+



○ **387280**

**Grey Whale**

Measurements: 11.2" x 4.3" x 2.6"

Case Pack: 3

3+



● **387114**

**Orca Male**

Measurements: 8.3" x 3.1" x 3.1"

Case Pack: 3

3+



● **387276**

**Orca Large**

Measurements: 8.7" x 3.5" x 3.7"

Case Pack: 3

3+



● **387354**

**Narwhal**

Measurements: 7.7" x 2.6" x 1.2"

Case Pack: 3

3+



○ **387277**

**Humpback Whale Large**

Measurements: 13.2" x 8.7" x 3.0"

Case Pack: 3

3+



● **387119**

**Humpback Whale**

Measurements: 10.0" x 4.7" x 1.8"

Case Pack: 3

3+



● **387278**

**Whale Shark**

Measurements: 9.4" x 4.3" x 2.8"

Case Pack: 3

3+



**● 387115**  
**Californian Sea Lion**

Measurements: 4.1" x 3.5" x 2.6"  
Case Pack: 3

3+



**NEW** **● 381036**  
**Octopus**

Measurements: 5.90" x 5.00" x 1.60"  
Case Pack: 3

3+



**● 387275**  
**Octopus**

Measurements: 5.9" x 4.7" x 1.8"  
Case Pack: 3

3+



**RETIRED**  
Order While  
Supplies Last.

**● 381050**  
**Coelacanth**

Measurements: 5.6" x 2.4" x 1.9"  
Case Pack: 3

3+



**● 387269**  
**Blue Tang Fish**

Measurements: 3.5" x 1.2" x 1.8"  
Case Pack: 3

3+



**● 387356**  
**Blue Grouper**

Measurements: 5.1" x 1.2" x 2.8"  
Case Pack: 3

3+



**● 387353**  
**Manta Ray**

Measurements: 4.9" x 6.3" x 0.8"  
Case Pack: 3

3+



**● 387352**  
**Spotted Eagle Ray**

Measurements: 4.9" x 5.7" x 0.8"  
Case Pack: 3

3+





● **387183**

**Polar Bear**

Measurements: 4.9" x 1.6" x 2.4"

Case Pack: 3

3+



● **387021**

**Polar Bear Cub - Sitting**

Measurements: 2.8" x 1.6" x 1.4"

Case Pack: 3

3+



● **387020**

**Polar Bear Cub - Walking**

Measurements: 2.6" x 1.2" x 1.6"

Case Pack: 3

3+



● **387209**

**Walrus**

Measurements: 5.1" x 3.1" x 2.0"

Case Pack: 3

3+



● **387208**

**Sea Elephant**

Measurements: 7.5" x 5.1" x 3.9"

Case Pack: 3

3+



● **387211**

**Manatee**

Measurements: 5.7" x 2.4" x 1.6"

Case Pack: 3

3+



● **387184**

**Gentoo Penguin**

Measurements: 1.6" x 2.0" x 2.6"

Case Pack: 3

3+





# PREHISTORIC WORLD

The dinos are loose! The T-Rex, brontosaurus, triceratops and their friends have been absolute trend animals over generations! Prehistoric animals and creatures always lead to impulse purchases.

● **387228**

## Stegosaurus

Measurements: 7.5" x 2.0" x 3.9"

Case Pack: 3

3+



5 031923 872288



● **387043**

## Stegosaurus

Measurements: 6.5" x 1.6" x 3.0"

Case Pack: 3

3+



5 031923 870437



● **387380**

## Stegosaurus

Measurements: 7.3" x 2.0" x 3.7"

Case Pack: 3

3+



5 031923 873803



● **387212**

## Brachiosaurus

Measurements: 8.5" x 2.0" x 6.7"

Case Pack: 3

3+



5 031923 872127



○ **387381**

## Deluxe Brachiosaurus

Measurements: 9.8" x 2.0" x 7.1"

Case Pack: 3

3+



5 031923 873810



● **387044**

## Brachiosaurus

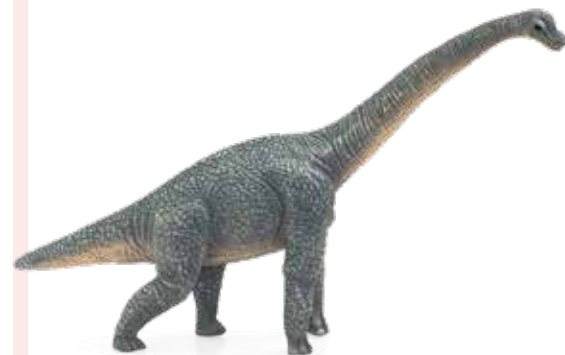
Measurements: 8.3" x 2.0" x 5.3"

Case Pack: 3

3+



5 031923 870444

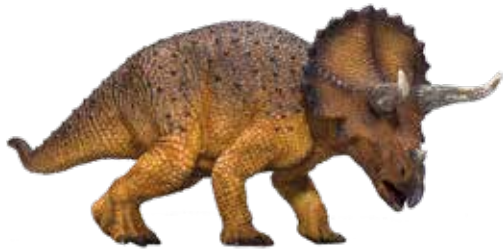


● **387364**

**Triceratops**

Measurements: 7.9" x 2.8" x 2.8"  
Case Pack: 3

3+



● **381017**

**Triceratops**

Measurements: 6.6" x 2.2" x 2.8"  
Case Pack: 3

3+



● **387258**

**New T-Rex with Articulated Jaw**

Measurements: 7.9" x 1.8" x 3.0"  
Case Pack: 3

3+



○ **387273**

**T-REX Hunting (Red)**

Measurements: 9.8" x 4.1" x 4.3"  
Case Pack: 3

3+



○ **387293**

**T-REX Hunting (Green)**

Measurements: 9.8" x 3.1" x 4.3"  
Case Pack: 3

3+



● **387192**

**T-Rex Baby**

Measurements: 4.9" x 1.6" x 3.5"  
Case Pack: 3

3+



○ **387379**

**Deluxe T Rex with Articulated Jaw**

Measurements: 12.2" x 3.1" x 4.7"  
Case Pack: 3

3+



● **387274**

**Allosaurus**

Measurements: 7.9" x 3.3" x 3.7"  
Case Pack: 3

3+



● **387383**

**Allosaurus with Articulated Jaw**

Measurements: 8.3" x 2.4" x 3.7"  
Case Pack: 3

3+





**381013**  
**Deluxe Giganotosaurus**

Measurements: 12.4" x 5.7" x 6.0"  
Case Pack: 3

3+



**387229**  
**Parasaurolophus**

Measurements: 5.9" x 2.0" x 4.9"  
Case Pack: 3

3+



**387045**  
**Parasaurolophus**

Measurements: 6.1" x 1.6" x 2.8"  
Case Pack: 3

3+



**387225**  
**Velociraptor**

Measurements: 7.1" x 2.0" x 5.3"  
Case Pack: 3

3+



**381022**  
**Velociraptor - Crouching**

Measurements: 3.9" x 1.0" x 2.4"  
Case Pack: 3

3+



**381027**  
**Velociraptor - Standing**

Measurements: 3.3" x 2.0" x 3.0"  
Case Pack: 3

3+



**387233**  
**Spinosaurus**

Measurements: 8.3" x 2.2" x 4.3"  
Case Pack: 3

3+



**387385**  
**Deluxe Spinosaurus with Articulated Jaw**

Measurements: 11.4" x 2.6" x 4.9"  
Case Pack: 3

3+



○ **387384**

**Deluxe Brontosaurus**

Measurements: 8.3" x 4.3" x 4.1"  
Case Pack: 3

3+



○ **387137**

**Diplodocus**

Measurements: 10.8" x 2.6" x 4.9"  
Case Pack: 3

3+



○ **387387**

**Deluxe Mamenchisaurus**

Measurements: 11.0" x 2.2" x 7.5"  
Case Pack: 3

3+



○ **381024**

**Mandschurosaurus**

Measurements: 9.8" x 2.8" x 4.3"  
Case Pack: 3

3+



● **387234**

**Ankylosaurus**

Measurements: 7.1" x 2.8" x 2.6"  
Case Pack: 3

3+



● **381025**

**Ankylosaurus**

Measurements: 7.3" x 2.6" x 2.6"  
Case Pack: 3

3+



● **381014**

**Deluxe Baryonyx**

Measurements: 10.0" x 2.7" x 3.1"  
Case Pack: 3

3+



● **387388**

**Baryonyx with Articulated Jaw**

Measurements: 9.4" x 2.8" x 4.3"  
Case Pack: 3

3+



● **387389**

**Troodon with Articulated Jaw**

Measurements: 8.7" x 2.4" x 4.3"  
Case Pack: 3

3+

5 031923 873896



● **387375**

**Tropeognathus**

Measurements: 7.1" x 3.1" x 1.0"  
Case Pack: 3

3+

5 031923 873759



● **387374**

**Dunkleosteus**

Measurements: 7.3" x 2.8" x 1.4"  
Case Pack: 3

3+

5 031923 873742



● **387046**

**Tylosaurus**

Measurements: 6.7" x 4.7" x 2.0"  
Case Pack: 3

3+

5 031923 870468



● **387155**

**Brontotherium**

Measurements: 7.1" x 2.0" x 3.1"  
Case Pack: 3

3+

5 031923 871557



● **387154**

**Deinotherium**

Measurements: 7.5" x 2.4" x 4.3"  
Case Pack: 3

3+

5 031923 871540



● **381032**

**Smilodon**

Measurements: 5.0" x 1.5" x 3.0"  
Case Pack: 3

3+

5 031923 810327



● **387157**

**Hyaenodon Gigas**

Measurements: 6.5" x 1.4" x 2.4"  
Case Pack: 3

3+

5 031923 871571



● **387156**

**Entelodont Daedon**

Measurements: 5.1" x 1.6" x 3.1"  
Case Pack: 3

3+

5 031923 871564





● **381049**

### Woolly Mammoth

Measurements: 16.1" x 15.7" x 14.2"  
Case Pack: 1

3+



● **387050**

### Woolly Mammoth Calf

Measurements: 3.9" x 2.0" x 2.8"  
Case Pack: 3

3+



● **387049**

### Woolly Mammoth 1:20 Scale - Classic

Measurements: 7.9" x 3.9" x 5.1"  
Case Pack: 3

3+



**RETIRED**  
Order While  
Supplies Last.

**NEW**

### **381009** Woolly Rhino

Measurements: 7.30" x 1.90" x 3.10"  
Case Pack: 3

3+



**NEW**

### **380041** Prehistoric Mammals Box Set

Measurements: 11.00" x 6.29" x 5.51"  
Case Pack: 3

3+



**NEW**

### **380039** Dinosaur Box Set 1

Measurements: 11.00" x 6.29" x 5.51"  
Case Pack: 3

3+



**NEW**

### **380040** Dinosaur Box Set 2

Measurements: 11.00" x 6.29" x 5.51"  
Case Pack: 3

3+



# FANTASY AND FIGURINES

Give room for imagination! Glittery unicorns, enchanted mythical creatures, and impressive dragons - the more figures you have, the bigger the fun! The perfect addition for your fantasy assortment.



● **387296**

## Unicorn Rainbow

Measurements: 6.9" x 3.1" x 4.5"

Case Pack: 3

3+



5 031923 872967



● **387360**

## Unicorn Baby Rainbow

Measurements: 3.9" x 0.8" x 3.1"

Case Pack: 3

3+



5 031923 873605



● **387361**

## Pegasus Baby Rainbow

Measurements: 3.9" x 2.2" x 4.3"

Case Pack: 3

3+



5 031923 873612



● **387295**

## Pegasus Rainbow

Measurements: 7.3" x 5.1" x 4.7"

Case Pack: 3

3+



5 031923 872950



● **387297**

**Unicorn Pink**

Measurements: 6.9" x 3.0" x 4.5"

Case Pack: 3

3+



● **387298**

**Pegasus Lilac**

Measurements: 7.3" x 5.1" x 4.7"

Case Pack: 3

3+



● **387288**

**Unicorn Baby**

Measurements: 3.9" x 1.2" x 3.1"

Case Pack: 3

3+



● **387289**

**Pegasus Baby**

Measurements: 3.9" x 2.2" x 4.3"

Case Pack: 3

3+



● **386510**

**Yeti Figure**

Measurements: 2.8" x 1.4" x 4.9"

Case Pack: 3

3+



● **387255**

**Dark Pegasus**

Measurements: 7.3" x 5.1" x 4.7"

Case Pack: 3

3+



● **387254**

**Dark Unicorn**

Measurements: 7.5" x 3.0" x 4.7"

Case Pack: 3

3+



● **386511**

**Big Foot**

Measurements: 3.3" x 1.4" x 4.9"

Case Pack: 3

3+





● **387250**

**Earth Dragon**

Measurements: 7.9" x 6.3" x 4.7"

Case Pack: 3



● **387214**

**Red Dragon**

Measurements: 6.3" x 4.7" x 4.5"

Case Pack: 3



● **387130**

**Fire Dragon Baby**

Measurements: 4.5" x 3.0" x 3.0"

Case Pack: 3



● **387253**

**Fire Dragon**

Measurements: 8.3" x 5.7" x 3.7"

Case Pack: 3



● **387256**

**Golden Dragon**

Measurements: 6.3" x 4.7" x 4.5"

Case Pack: 3



● **387215**

**Steel Dragon**

Measurements: 6.3" x 4.7" x 4.5"

Case Pack: 3



● **387252**

**Sea Dragon**

Measurements: 9.8" x 4.9" x 5.1"

Case Pack: 3





# POS & accessories

Attractive sales displays and shelf solutions will offer the optimal presentation for all mojo figures and boxed sets all in one place. The new metal display is a new and sturdy update with adjustable shelves, clear dividers and wheels to make easy floor plan adjustments. This display will allow for an attention-drawing product presentation at your point of sale!

**NEW**

● **387536**

## MOJO 1M Metal Display

Measurements: 39.50" x 27.00" x 62.00"

Case Pack: 1

3+







FLIP TO SEE BABY GEAR







Made to care, designed for love

Collection '24  
**BABY GEAR**

[www.hauckusa.com](http://www.hauckusa.com)



## CONTENTS

Strollers  
04 – 07

Highchairs  
08 – 09

Highchair  
Accessoires  
10 – 13

Travel Beds  
14 – 15

Flip this catalog to see  
our **Toy Collection!**



# FROM OUR FAMILY TO YOURS

We've been looking after families since 1923, with equipment and toys for babies, giving children the best possible start in life.

We understand what it means and how it feels to raise a family, and we'll be here, whatever your story and whatever path you choose. We've been caring for families like yours and helping to give babies the very best start in life since 1923, inventing and developing products you can rely on, at prices that work for you. From the moment your baby is born, we're here to help make every moment that little bit easier as you get into the swing of your new family life. With our baby essentials like comfortable cots and

practical pushchairs to long-lasting highchairs, everything we make is designed to perfectly fit and safely support your baby's body and mind.

Passing on four generations of knowledge and support, we're here to help you find the ways to care for your new family that work best for you.

*Made to care, designed for love*

# 100 YEARS OF HISTORY

A history of over 100 years of agility

- 1923** Originally, the company was founded by Felix Hauck as a basketry.
- 1950s** The product range has been in constant development. The bassinets were followed by footmuffs.
- 1960s** hauck was the first nursery brand to source products from outside Germany.
- 1970s** The collection is expanded to include cots and prams, which very quickly become sought-after nationwide.
- 1980s** hauck became the first licensee of Disney in the German nursery segment. Together, hauck and Disney will celebrate their 100-year anniversary in 2023.
- 1990s** hauck again proved the ability to re-invent itself, this time as a pioneer in channel distribution: In the 90s, it started to supply the department stores KARSTADT and KAUFHOF.
- 2000s** hauck was the first company in the industry to sell its baby and children's products through amazon.de.
- 2010s** Other product premieres such as our various value sets further improved hauck's leading position on the market.
- 2020s** An investment of the private equity company AVEDON Capital Partners BV now aims to further develop the business model and accelerate the growth.
- 2022** hauck acquires the US division of Legler Toys and creates hauck North America.
- 2023** hauck is celebrating the 100th anniversary and expanding the product portfolio to become the most caring newborn companion with a 360-degree product portfolio around babies.
- 2024** hauck North America begins its first domestic distribution of baby products in North America!







● 66187  
**Alpha Tray**  
More on page 10



**Embracing**

We're optimistic, accessible and warm, celebrating the joy, love and play that comes with babies.



**Open**

We're here for every type of family and represent an open and tolerant world view. Inclusion and diversity are a matter of principle for us.



**Honest**

We attach great importance to sincerity and integrity. We admit mistakes, talk about them openly and share what we learn from them.



**Responsible**

We focus on safety, reliability and accountability, and we're constantly thinking about how we can make the world a better place.







# Uptown

Measurements: 21.1" x 8.1" x 28.3"

Case Pack: 1

6m+

14826 - Melange - Rose



14827 - Melange - Black



**NEW**

14828 - Melange - Grey



14829 - Melange - Beige





**27420**

**Runner 2 - Black**

Measurements: 18.7" x 14.6" x 33.9"

Case Pack: 1

6m+



4 007923 274200



**17142**

**Sport - Charcoal/Stone**

Measurements: 16.1" x 7.1" x 29.9"

Case Pack: 1

6m+



4 007923 171424













# Alpha+

Measurements: 20.87" x 34.84" x 3.15"

Case Pack: 1

36m+

66107 - Natural



66113 - Walnut



66116 - White



66117 - Grey



66131 - Rose



**SUSTAINABLE**  
FSC® CERTIFIED

FSC  
www.fsc.org  
FSC® C178418

EUROPEAN  
BEECH WOOD

A HIGHCHAIR,  
**THAT GROWS ALONG**

UP TO 198 LBS

**TILT-PROOF**  
CONSTRUCTION

# Alpha+

Measurements: 20.87" x 34.84" x 3.15"

Case Pack: 1

36m+

66138 - Cork



66139 - Vanilla



66144 - Creme



66142 - Mint



66145 - Black





# Alpha Tray

Measurements: 12.6" x 11.0" x 22.0"

Case Pack: 2

6m+

66187 - White



66199 - Grey







# Highchair Pad Select

Measurements: 10.8" x 2.4" x 18.9"

Case Pack: 4

6m+

66745 - Muslin cotton - Mint



66746 - Muslin cotton - Mineral Rose



66747 - Jersey - Flowers - Rose



66749 - Jersey - Leaves - Mint



## HIGH-QUALITY ACCESSORIES



**HIGHCHAIR PAD**  
BACK & SEAT PADS  
FROM 6 MONTHS



**ALPHA COSY**  
SEAT REDUCER  
FROM 6 MONTHS

**SOFT SEAT PAD**  
FOR ALPHA+ HIGHCHAIRS



EASY-HANDLING  
**EASY AND PERFECT FIT**



COMFORT & SAFETY  
**EXTRA-HIGH BACK PIECE**



**COMPATIBLE WITH**  
THE ALPHA TRAY





**66703**

**Highchair Pad Select - Jersey - Charcoal**

Measurements: 10.8" x 2.4" x 18.9"  
Case Pack: 1

6m+



**66767**

**Highchair Pad Deluxe - Nordic - Grey**

Measurements: 9.8" x 2.4" x 18.1"  
Case Pack: 1

6m+



**Alpha Cosy Select**

Measurements: 12.2" x 2.4" x 15.2"  
Case Pack: 4

6m+

**66784 - Nordic - Grey**



**66785 - Jersey - Charcoal**



**66786**

**Alpha Cosy Comfort - Stretch Grey**

Measurements: 12.2" x 2.4" x 15.2"  
Case Pack: 4

6m+



ANTI-SLIP  
COATING









# Play N Relax Center

Measurements: 10.2" x 8.9" x 30.3"

Case Pack: 1

0m+

60009 - Melange - Charcoal



60010 - Melange - Black



60011 - Quilted - Grey



**PREMIUM SET WITH MANY OPTIONS**

**EASY ASSEMBLY AND FOLDING**

**BACK-FRIENDLY**

EASY TO LAY DOWN

**HIGHLY SECURE STABLE FRAME**

**NEW 89092 Sleeper Gray Mattress**

Measurements: 23.6" x 15.7" x 3.0"

Case Pack: 6

0m+



**SUPER SOFT**

**EASY & COMPACT TO TRANSPORT**

