

**WALK N CARE AIR SET**  
AIR-SUSPENDED PREMIUM PUSHCHAIR SET



**COMFORTABLE, AIR-SUSPENDED TRAVEL FOR YEARS**

/

**HIGH-QUALITY FUNCTIONS AND STYLISH DESIGN**

/

**EASY HANDLING FOR A FLEXIBLE EVERYDAY LIFE**



**LONG-LASTING COMPANION**  
WITH HIGH CAPACITY

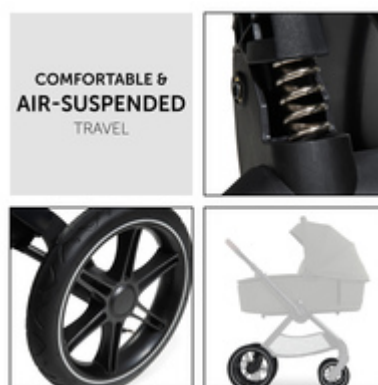


**LONG-LASTING COMPANION WITH  
HIGH CAPACITY**

Would you like a pushchair from birth and for many years to come? You can use the Walk N Care Set with pram and pushchair up to approx. 4 years as it takes up to 25 kg (22 kg child + 3 kg basket).

**COMFORTABLE AND AIR-  
CUSHIONED ON THE GO**

Street, park or forest path – the suspension and air wheels offer your baby a pleasant ride on any terrain. The high-quality aluminium frame is robust, stable and lightweight.



**PLEASANT PUSHING**  
THANKS TO TELESCOPIC HANDLE



**PLEASANT PUSHING THANKS TO  
TELESCOPIC HANDLE**

The height-adjustable telescopic handlebar offers all parents a comfy and back-friendly walk as well as legroom. The soft handle padding makes it even more comfortable.

## EASY HEIGHT-ADJUSTABLE PUSHCHAIR SEAT

Be it in a café, restaurant or beer garden – thanks to the 3 positions, you can adjust the seat to your seating height, allowing your child to sit comfortably and enjoy food together with you.

### HEIGHT-ADJUSTABLE SEAT



### ONE-HANDED REMOVAL WITH MEMORY BUTTONS



## COMFORTABLE CARRYCOT WITH MEMORY FUNCTION

The memory function allows you to comfortably remove the carrycot from the frame with one hand, not waking your baby up after your walk. One hand remains always free.

## HIGH-QUALITY MATERIALS AND ELEGANT DESIGN

The set is made of easy-care fabrics, UV protection 50+ as well as handle and bumper bar with leather look. The two XXL panorama windows provide fresh air and easy viewing of back or tummy position.



ADJUSTABLE COMFORT SEAT  
**WITH LYING POSITION**



ADJUSTABLE COMFORT SEAT WITH  
LYING POSITION

The seat offers your child plenty of room for discovery. For sleeping, you can fully recline the backrest with one hand and adjust the footrest upwards. The boot cover keeps your child warm.

REVERSIBLE SEAT UNIT WITH TWO  
VIEWING DIRECTIONS

Does your child prefer looking towards you or the surroundings? For a spontaneous change of direction, you can easily turn the soft seat around with a click and keep eye contact with your child.

**REVERSIBLE SEAT UNIT**  
WITH TWO VIEWING DIRECTIONS



**EASY & COMPACT**  
FOLDING



EASY FOLDING FOR SPACE-SAVING  
TRANSPORT

The carrycot folds up flat while the pushchair is free-standing after its one-hand fold. Thanks to the compact size, you can easily transport it in your car boot during your next trip away from home.

WALK N CARE AIR SET  
AIR-SUSPENDED PREMIUM PUSHCHAIR SET



Product Images

**AIR-SUSPENDED PREMIUM PUSHCHAIR SET**

**LONG-LASTING COMPANION WITH HIGH CAPACITY**

FROM BIRTH      UP TO 25 KG

**COMFORTABLE & AIR-SUSPENDED TRAVEL**

**PLEASANT PUSHING THANKS TO TELESCOPIC HANDLE**

**HEIGHT-ADJUSTABLE SEAT**

**ONE-HANDED REMOVAL WITH MEMORY BUTTONS**

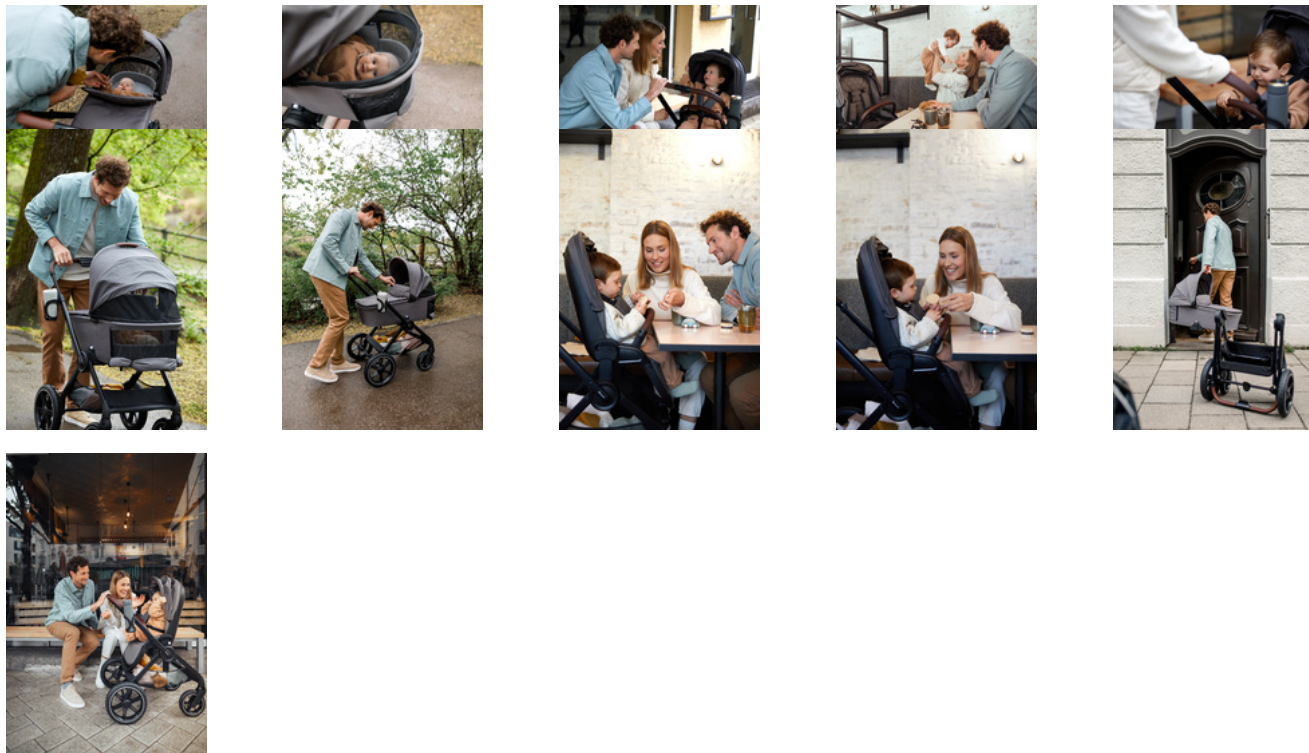
**HIGH-QUALITY MATERIALS & ELEGANT DESIGN**

**ADJUSTABLE COMFORT SEAT WITH LYING POSITION**

**REVERSIBLE SEAT UNIT WITH TWO VIEWING DIRECTIONS**

**EASY & COMPACT FOLDING**

Lifestyle Images



### **Walk N Care Air Set - Air-suspended premium pushchair set**

#### **Long-lasting companion from birth up to toddler age**

High-quality, comfortable and safe – you can first use the Walk N Care Air with the carrycot and later on with the comfort seat, making the set suitable from birth up to approximately 4 years and supports up to 25 kg (22 kg child + 3 kg basket). The suspension, air wheels and the light but robust aluminium frame make driving child's play on any terrain. The height-adjustable telescopic handlebar offers all parents back-friendly pushing and more legroom. The premium design is made of durable, easy-care fabrics with UV protection 50+, handlebar and bumper bar in leather look as well as a mattress with washable cotton cover.

#### **High-end extras: XXL panorama windows, memory function and height-adjustable seat**

Thanks to the two XXL panorama windows, your baby has fresh air and a great view when lying on the back or on the tummy. The memory function allows you to comfortably remove the carrycot from the frame with one hand, not waking your baby up and always having a free hand. The seat unit can be reversed with a click and adjusted in height when at a café or restaurant. For sleeping, you can fully recline the backrest with one hand and adjust the footrest upwards. The boot covers keeps your child warm on cold days.

#### **Foldable, space-saving and compatible**

For space-saving transport, you can fold the pushchair with one hand and the carrycot to flat. You can also combine the frame with an infant car seat by hauck or other manufacturers by means of adapters, as well as with a hauck raincover or seat liner.

## **Shipping**

- Pushchair
- Cup holder
- Pram
- Boot cover
- Instruction manual

## **Videos**

- <https://www.youtube.com/watch?v=5CVXO5xPY-4>
- <https://www.youtube.com/watch?v=yGp1dIMPKZM>
- hauck Youtube Channel

# WALK N CARE AIR SET

## AIR-SUSPENDED PREMIUM PUSHCHAIR SET



**Product net weight** 16,90 kg

### Dimensions

#### Walk N Care Air

**Product net weight** 11,35 kg

**Product gross weight** 13,60 kg

### Dimensions

**Folded** 74 x 60 x 31 cm

**Built up** 98 x 60 x 107 cm

**Lying area** 87 x 28 cm

**Dimensions backrest** 48 x 30 cm

**Dimensions seat area** 23 x 30 cm

**Shopping basket** Yes

**Detachable front bar** Yes

**Detachable canopy** Yes

**Sun protection UPF 50+** Yes

**Suspension** Yes

**Easy Fold** Yes

**Reversible seat unit** Yes

**Brake type** Combined brake system

**Max. load** 25 kg (22 kg kids + 3 kg basket)

**Legrest adjustment** 3 x

**Canopy type** Extendable 3-zone canopy

**Large sun canopy** Yes

**Harness** 5-Point harness

**Aluminum frame** Yes

**Easy to clean** Yes

**Age information** 0 - 48 months

### Wheels

**Swivelling and lockable front wheel(s)** Yes

**Diameter front/back wheel** 20,5 / 30,5 cm

**Detachable wheels** Front and back wheel

## Dimensions

## Wheels

## Backrest

## Handle

Wheel type	Air wheel
------------	-----------

## Backrest

Backrest adjustment	3 x /103 - 165 °
---------------------	------------------

One-handed backrest inclination	Yes
---------------------------------	-----

## Handle

Handle type	Telescopic handlebar
-------------	----------------------

Height-adjustable handle	5 x
--------------------------	-----

Handle height	92-107 cm
---------------	-----------

## Walk N Care Carrycot

Product net weight	4,95 kg
--------------------	---------

Product gross weight	6,35 kg
----------------------	---------

Foldable carrycot	Yes
-------------------	-----

Integrated ventilation	Yes
------------------------	-----

Peek-a-boo window	Yes
-------------------	-----

Age information	from 0 months to 9 kg
-----------------	-----------------------

Sun protection UPF 50+	Yes
------------------------	-----

Max. load	9 kg
-----------	------

## Dimensions

Lying area	77 x 34 cm
------------	------------

Folded	88 x 45 x 22 cm
--------	-----------------

Built up	88 x 45 x 66 cm
----------	-----------------