

UPTOWN

A PARTICULARLY COMFORTABLE STROLLER



- Comfortable equipment and accents in leatherette
- Protective canopy with UPF 50+
- Pleasant pushing thanks to height-adjustable handle
- Comfortable ride thanks to adjustable seat
- Drinks right at hand in the practical cup holder
- Easy and compact folding for transport and storage
- Up to 55 lbs (48,5 lbs child + 6,6 lbs basket)
- Robust frame and rubber wheels for urban life
- Fresh air thanks to peek-a-boo window
- Agile thanks to swivelling front wheels



STABLE PUSHCHAIR FOR YEARS OF USE

The stylish all-rounder has many great features and offers premium comfort up to 4 years with its high-quality equipment and modern accents.



HIGH-QUALITY RUBBER WHEELS FOR ALL TERRAINS

Thanks to the swivelling or lockable rubber wheels and the light, suspended aluminium frame, the Uptown is easy to manoeuvre on any terrain.

EASY TRANSPORT THANKS TO FAST FOLDING

For transport, the Uptown folds away easily. On bus or stairs, you can transport the pushchair by the release loop that doubles up as carry handle.



EASYFOLD

★
little one's
WELL-BEING

COMFORTABLE THANKS TO ADJUSTABLE SEAT

The soft and spacious seat comes with an adjustable backrest and footrest. Simply perfect for a snooze on long trips away from home!



comfortable
ON TOUR



PLEASANT DRIVING THANKS TO VARIOUS ADJUSTMENTS

The adjustable protection bar offers your child not only safety, but also freedom of movement. The height-adjustable handlebar with cup holder makes the Uptown a great companion for parents with different heights.

RELIABLE SUN PROTECTION AND PEEK- A-BOO WINDOW

The extendable sun canopy, rated UPF 50+, comes with a practical ventilation window that helps you keeping eye contact with your child.



UPTOWN

BABY THINGS RIGHT AT HAND IN THE LARGE BASKET

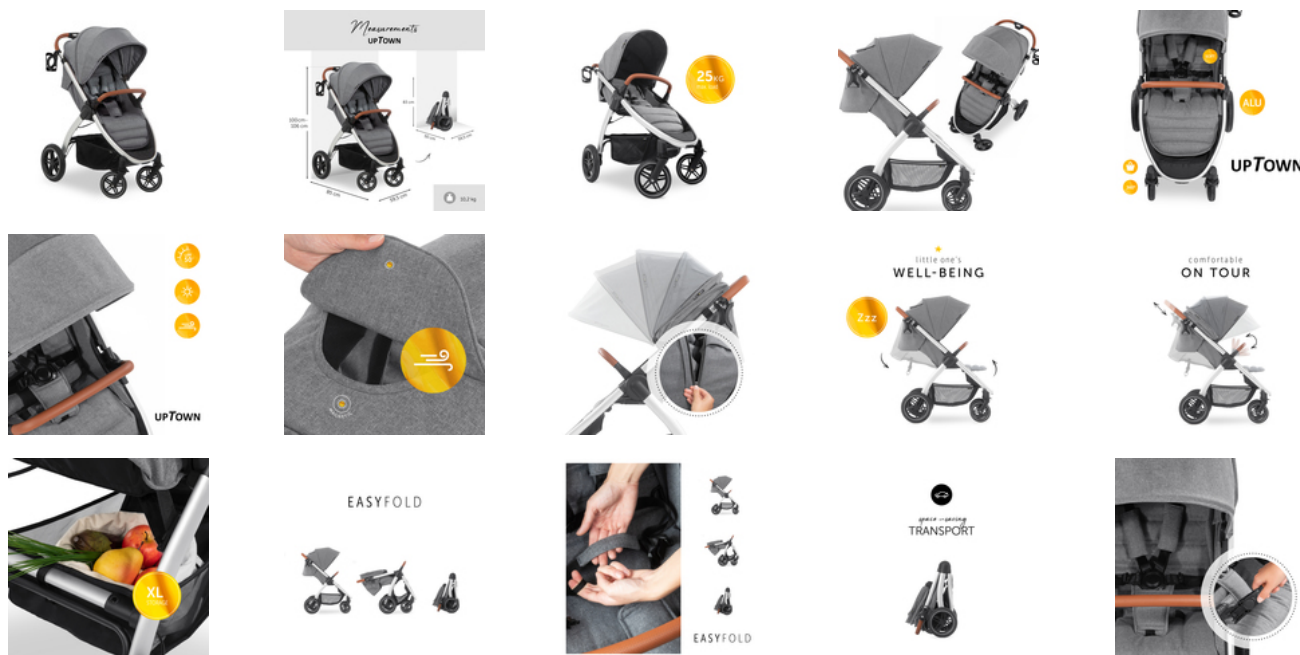
During your trip away from home, you can stow all accessories, toys and some purchases in the large basket.



UPTOWN
A PARTICULARLY COMFORTABLE STROLLER



Product Images



Lifestyle Images



A particularly comfortable stroller

Chic and comfortable: the upholstery

Bumpy floors, curbs, stairs... The high-quality upholstery and wide seat of the Uptown stroller ensures that your child sits comfortably. For relaxed journeys!

For a stylish appearance on the playground: the Uptown stroller is available in many colours. Whether timeless or modern, we have just the right thing for you too!

Suitable for the city and country

With the Uptown pushchair, you can leave the city behind: its puncture-resistant rubber wheels with all-wheel suspension and the lockable front wheels will take you over rough terrain safe and sound.

Do you attach importance to quality? The Uptown convinces with its lightweight aluminium frame, the front bar made of perforated leatherette, and the height-adjustable push handle.

Sitting or lying down

Does your little darling want to take a nap? Just bring the backrest and leg supports into a comfy resting position! The best thing about it: children's feet are really secure on the anti-slip surface.

Got some extra bags to carry? Has your child already grown? That is no problem for the Uptown stroller. It can easily take children up to 48.5 lbs, as well as 6.6 lbs of toys or shopping!

Shipping

- Stroller
- Cup holder
- Storage basket
- Wheels
- Instruction manual

Video

- <https://www.youtube.com/watch?v=VF5goEpc7LQ>
- hauck Youtube Channel

UPTOWN

A PARTICULARLY COMFORTABLE STROLLER



Product net weight 10,30 kg 22.71 lb / US

Dimensions

Folded 32.7 x 23.2 x 19.7 in

Built up 33.5 x 23.2 x 42.1 in

Lying area 33.5 x 14.2 in

Dimensions backrest 18.9 x 13.4 in

Dimensions seat area 8.7 x 14.2 in

Shopping basket Yes

Detachable front bar Yes

Detachable canopy Yes

Sun protection UPF 50+ Yes

Suspension Yes

Easy Fold Yes

Brake type Combined brake system

Max. load 55 lbs (48 lbs kids + 7 lbs basket)

Legrest adjustment 1x x

Canopy type 3 Section

Large sun canopy Yes

Harness 5-Point harness

Aluminum frame Yes

Age information 0 - 48 months

Wheels

Swivelling and lockable front wheel(s) Yes

Diameter front/back wheel 6.69/10.24 in

Detachable wheels Front and back wheel

Wheel type Rubber wheel

Backrest

Backrest adjustment continuously /105 - 160 °

One-handed backrest inclination Yes

Handle

Handle type Telescopic handlebar

Height-adjustable handle yes

Dimensions

Wheels

Backrest

Handle

Handle height

39.37 - 41.73 in