

WALK N CARE AIR SET
AIR-SUSPENDED PREMIUM PUSHCHAIR SET



**COMFORTABLE, AIR-SUSPENDED TRAVEL FOR
YEARS**

/

HIGH-QUALITY FUNCTIONS AND STYLISH DESIGN

/

EASY HANDLING FOR A FLEXIBLE EVERYDAY LIFE



LONG-LASTING COMPANION
WITH HIGH CAPACITY

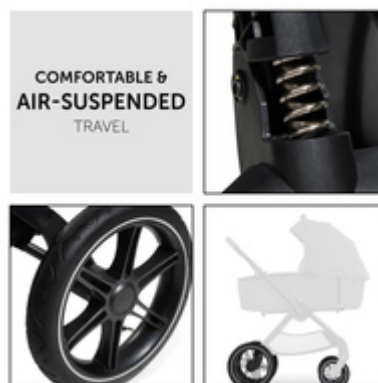


**LONG-LASTING COMPANION WITH
HIGH CAPACITY**

Would you like a pushchair from birth and for many years to come? You can use the Walk N Care Set with pram and pushchair up to approx. 4 years as it takes up to 25 kg (22 kg child + 3 kg basket).

**COMFORTABLE AND AIR-
CUSHIONED ON THE GO**

Street, park or forest path – the suspension and air wheels offer your baby a pleasant ride on any terrain. The high-quality aluminium frame is robust, stable and lightweight.



PLEASANT PUSHING
THANKS TO TELESCOPIC HANDLE



**PLEASANT PUSHING THANKS TO
TELESCOPIC HANDLE**

The height-adjustable telescopic handlebar offers all parents a comfy and back-friendly walk as well as legroom. The soft handle padding makes it even more comfortable.

EASY HEIGHT-ADJUSTABLE PUSHCHAIR SEAT

Be it in a café, restaurant or beer garden – thanks to the 3 positions, you can adjust the seat to your seating height, allowing your child to sit comfortably and enjoy food together with you.

HEIGHT-ADJUSTABLE SEAT



ONE-HANDED REMOVAL WITH MEMORY BUTTONS



COMFORTABLE CARRYCOT WITH MEMORY FUNCTION

The memory function allows you to comfortably remove the carrycot from the frame with one hand, not waking your baby up after your walk. One hand remains always free.

HIGH-QUALITY MATERIALS AND ELEGANT DESIGN

The set is made of easy-care fabrics, UV protection 50+ as well as handle and bumper bar with leather look. The two XXL panorama windows provide fresh air and easy viewing of back or tummy position.



ADJUSTABLE COMFORT SEAT
WITH LYING POSITION



ADJUSTABLE COMFORT SEAT WITH
LYING POSITION

The seat offers your child plenty of room for discovery. For sleeping, you can fully recline the backrest with one hand and adjust the footrest upwards. The boot cover keeps your child warm.

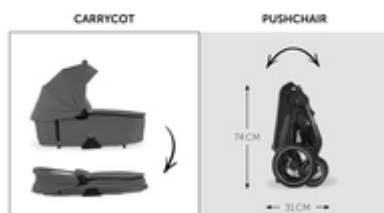
REVERSIBLE SEAT UNIT WITH TWO
VIEWING DIRECTIONS

Does your child prefer looking towards you or the surroundings? For a spontaneous change of direction, you can easily turn the soft seat around with a click and keep eye contact with your child.

REVERSIBLE SEAT UNIT
WITH TWO VIEWING DIRECTIONS



EASY & COMPACT
FOLDING



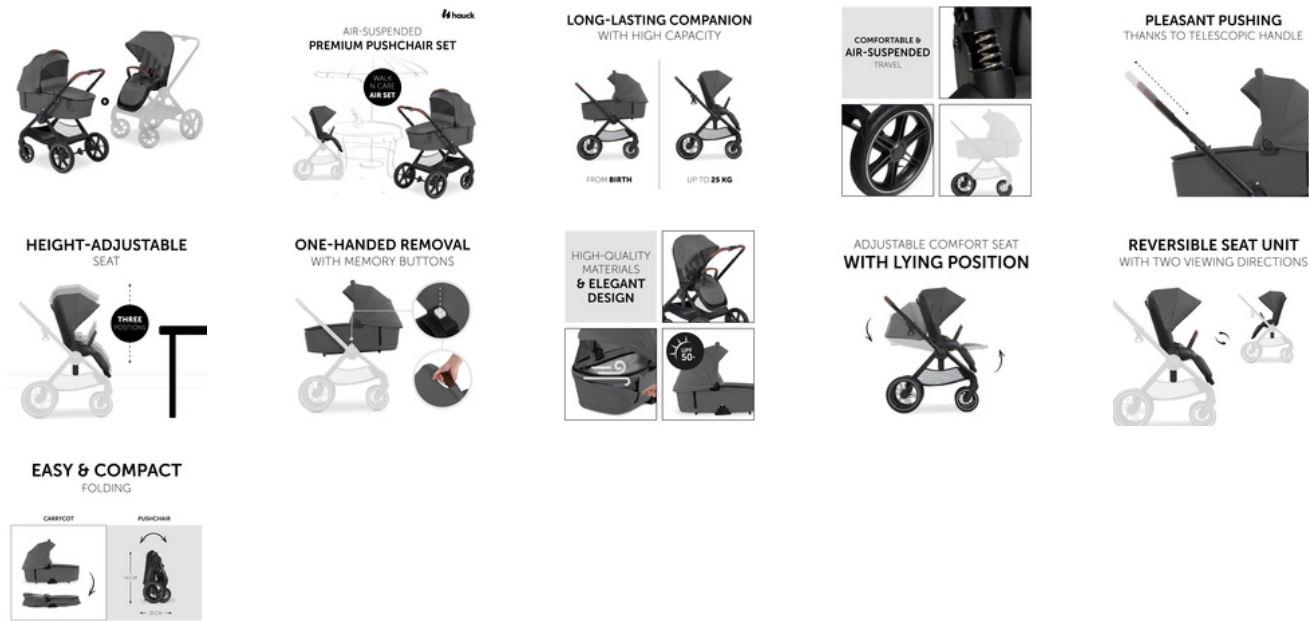
EASY FOLDING FOR SPACE-SAVING
TRANSPORT

The carrycot folds up flat while the pushchair is free-standing after its one-hand fold. Thanks to the compact size, you can easily transport it in your car boot during your next trip away from home.

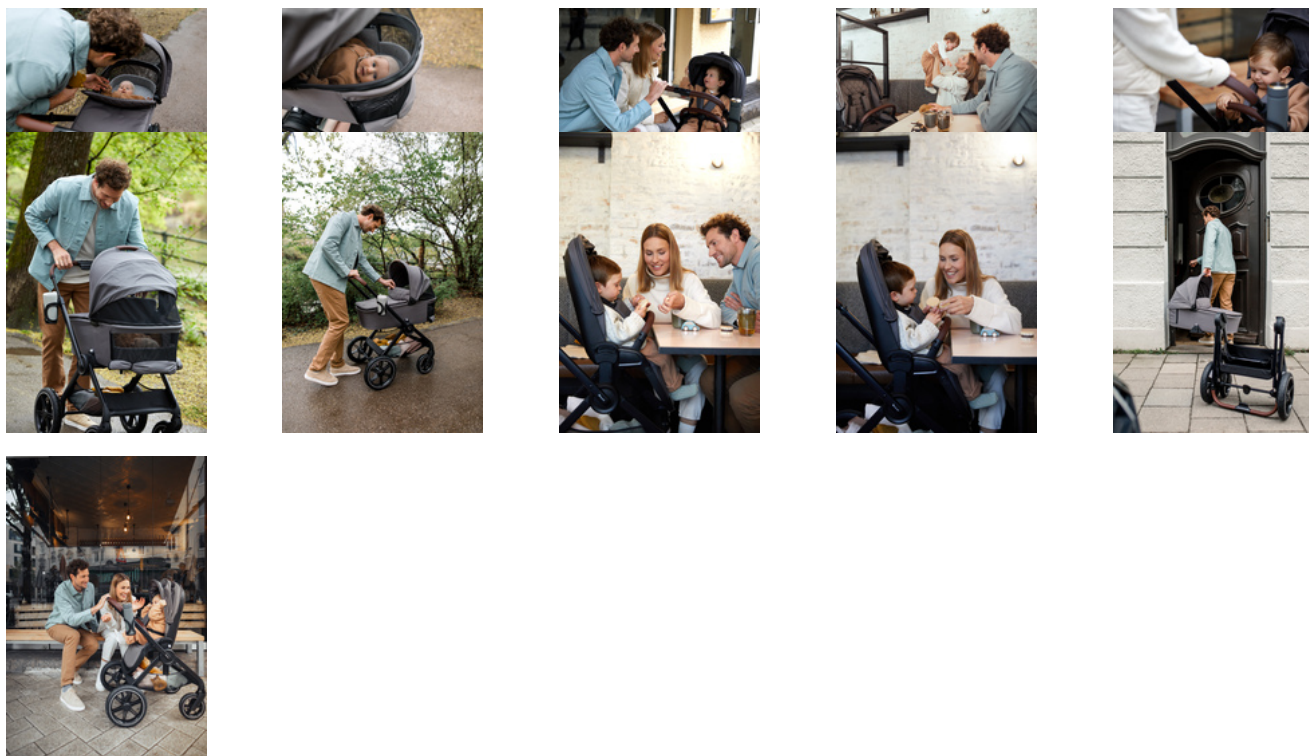
WALK N CARE AIR SET
AIR-SUSPENDED PREMIUM PUSHCHAIR SET



Product Images



Lifestyle Images



Walk N Care Air Set - Air-suspended premium pushchair set

Long-lasting companion from birth up to toddler age

High-quality, comfortable and safe – you can first use the Walk N Care Air with the carrycot and later on with the comfort seat, making the set suitable from birth up to approximately 4 years and supports up to 25 kg (22 kg child + 3 kg basket). The suspension, air wheels and the light but robust aluminium frame make driving child's play on any terrain. The height-adjustable telescopic handlebar offers all parents back-friendly pushing and more legroom. The premium design is made of durable, easy-care fabrics with UV protection 50+, handlebar and bumper bar in leather look as well as a mattress with washable cotton cover.

High-end extras: XXL panorama windows, memory function and height-adjustable seat

Thanks to the two XXL panorama windows, your baby has fresh air and a great view when lying on the back or on the tummy. The memory function allows you to comfortably remove the carrycot from the frame with one hand, not waking your baby up and always having a free hand. The seat unit can be reversed with a click and adjusted in height when at a café or restaurant. For sleeping, you can fully recline the backrest with one hand and adjust the footrest upwards. The boot covers keeps your child warm on cold days.

Foldable, space-saving and compatible

For space-saving transport, you can fold the pushchair with one hand and the carrycot to flat. You can also combine the frame with an infant car seat by hauck or other manufacturers by means of adapters, as well as with a hauck raincover or seat liner.

Shipping

- Stroller
- Cup holder
- Carrycot
- Boot cover
- Instruction manual

Videos

- <https://www.youtube.com/watch?v=5CVXO5xPY-4>
- <https://www.youtube.com/watch?v=yGp1dIMPKZM>
- hauck Youtube Channel

WALK N CARE AIR SET

AIR-SUSPENDED PREMIUM PUSHCHAIR SET



Product net weight 16,90 kg 37.26 lb / US

Dimensions

Walk N Care Air

Product net weight 11,35 kg 25.02 lb / US

Product gross weight 13,60 kg 29.98 lb / US

Dimensions

Folded 29.1 x 23.6 x 12.2 in

Built up 38.6 x 23.6 x 42.1 in

Lying area 34.3 x 11 in

Dimensions backrest 18.9 x 11.8 in

Dimensions seat area 9.1 x 11.8 in

Shopping basket Yes

Detachable front bar Yes

Detachable canopy Yes

Sun protection UPF 50+ Yes

Suspension Yes

Easy Fold Yes

Reversible seat unit Yes

Brake type Combined brake system

Max. load 55 lbs (48 lbs kids + 7 lbs basket)

Legrest adjustment 3 x

Canopy type Extendable 3-zone canopy

Large sun canopy Yes

Harness 5-Point harness

Aluminum frame Yes

Easy to clean Yes

Age information 0 - 48 months

Wheels

Swivelling and lockable front wheel(s) Yes

Diameter front/back wheel 8.07/12.01 in

Detachable wheels Front and back wheel

Dimensions

Wheels

Backrest

Handle

Wheel type	Air wheel
------------	-----------

Backrest

Backrest adjustment	3 x /103 - 165 °
---------------------	------------------

One-handed backrest inclination	Yes
---------------------------------	-----

Handle

Handle type	Telescopic handlebar
-------------	----------------------

Height-adjustable handle	5 x
--------------------------	-----

Handle height	92-107 in
---------------	-----------

Walk N Care Carrycot

Product net weight	4,95 kg 10.91 lb / US
--------------------	-----------------------

Product gross weight	6,35 kg 14.00 lb / US
----------------------	-----------------------

Foldable carrycot	Yes
-------------------	-----

Integrated ventilation	Yes
------------------------	-----

Peek-a-boo window	Yes
-------------------	-----

Age information	from 0 months to 9 kg
-----------------	-----------------------

Sun protection UPF 50+	Yes
------------------------	-----

Max. load	20 lbs
-----------	--------

Dimensions

Lying area	30.3 x 13.4 in
------------	----------------

Folded	34.6 x 17.7 x 8.7 in
--------	----------------------

Built up	34.6 x 17.7 x 26 in
----------	---------------------