

WITH XL PNEUMATIC WHEELS FOR XL RIDING  
COMFORT

/

ALSO FOR OLDER CHILDREN

/

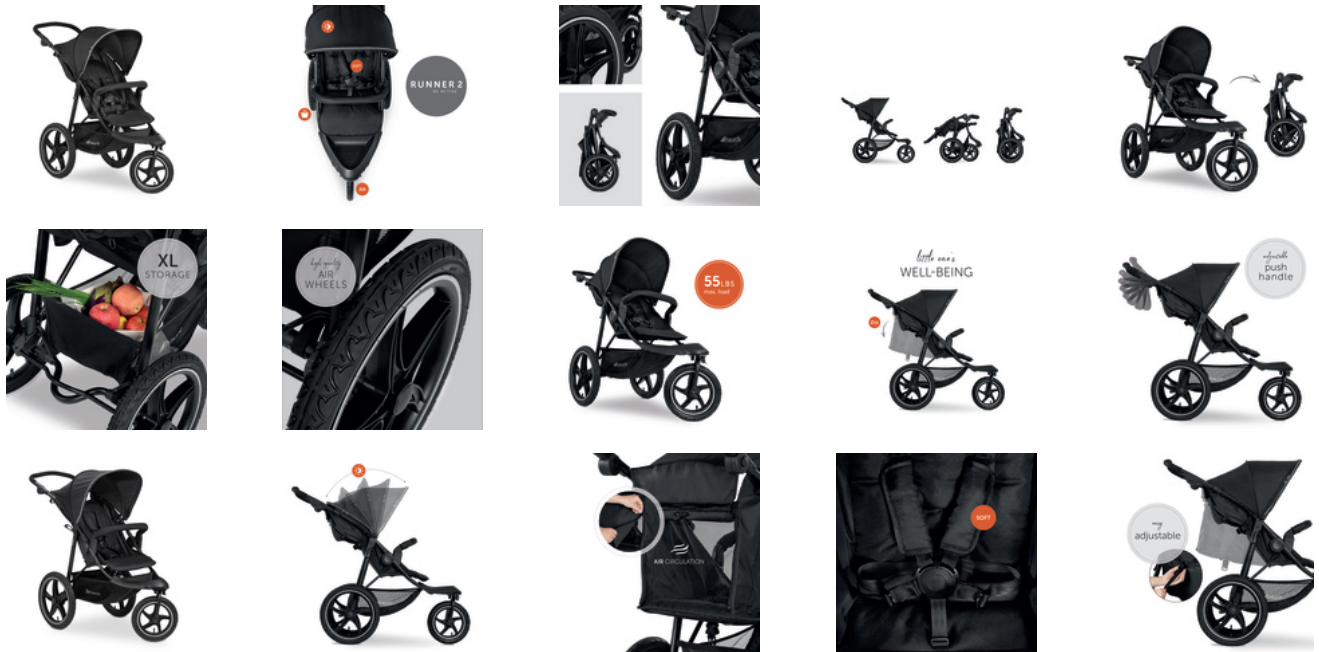
PROTECTED FROM THE SUN AND WELL  
VENTILATED



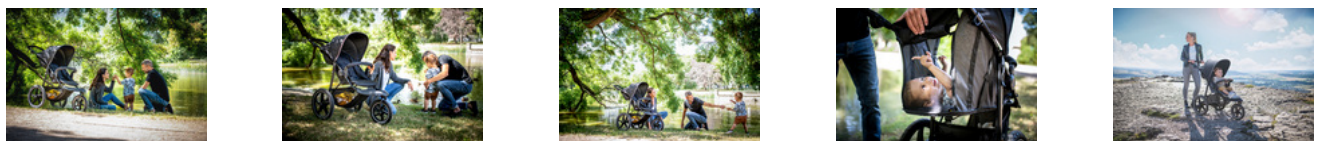
RUNNER 2  
ROBUST ALL-TERRAIN STROLLER



Product Images



Lifestyle Images



### **Robust all-terrain stroller**

#### **XL pneumatic wheels for XL comfort**

Three large pneumatic wheels for all-terrain use: the Runner 2 with swiveling and lockable front wheel takes you almost anywhere!

Is your child a little taller? The Runner can take a beating! In the soft seat with adjustable backrest, your child up to 48 lbs is comfortable in an upright or reclined position.

#### **Comfortable for your child...**

The canopy protects your child from UV rays (UPF 50+), while the large ventilation window ensures healthy air circulation.

The Runner pushchair has a height-adjustable 5-point harness. The swiveling bumper bar makes getting in and out child's play.

#### **... and for you**

The stroller adapts to you – adjust the handlebar for your own comfort, from 29.92 to 42.52 in!

Going on a trip? It's quick and easy to fold up the Runner 2 (34.3 x 23.2 x 18.5 in) and remove the rear wheels.

#### **Plenty of storage space and lots of accessories**

Toys, nappy bag, food: even a quick outing has baggage. The XL basket carries up to 6.6 lbs!

Many more accessories to add on: the Stroller Raincover 3 W, the Stroller Seat Liner and the Carry N Play – the 3in1 baby nest, footmuff and play blanket.

## **Shipping**

- Stroller

**Product net weight** 10,96 kg 24.16 lb / US

### Dimensions

**Folded** 34.3 x 23.2 x 18.5 in

**Built up** 48.4 x 23.2 x 42.5 in

**Lying area** 29.5 x 13 in

**Dimensions backrest** 17.7 x 13 in

**Dimensions seat area** 11 x 14.6 in

**Shopping basket** Yes

**Detachable front bar** Yes

**Detachable canopy** Yes

**Sun protection UPF 50+** Yes

**Brake type** Combined brake system

**Max. load** 55 lbs (48 lbs kids + 7 lbs basket)

**Canopy type** Removable

**Harness** 5-Point harness

**Easy to clean** Yes

**Age information** 6 - 48 months

### Wheels

**Swivelling and lockable front wheel(s)** Yes

**Diameter front/back wheel** 11.81/15.75 in

**Detachable wheels** Back wheel

**Wheel type** Air wheel

### Backrest

**Backrest adjustment** continuously /109 - 136 °

**One-handed backrest inclination** Yes

### Handle

**Handle type** Rotating handlebar

**Height-adjustable handle** 11 x

**Handle height** 29.92 - 42.52 in